

CJT KIT *Concealed Joist Tie Kit*

The CJT is a concealed connector that can be installed three different ways: with no routing of the header/post or beam, a routed header/post, or a routed beam. The CJT Kit comes with the required Simpson Strong-Tie[®] SDS¹/₄ x 3 screws and a choice of 1/2" x 2³/₄" or 1/2" x 4³/₄" pins.

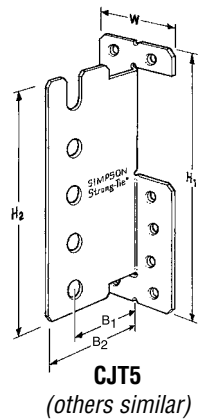
- MATERIAL:** 12 gauge
FINISH: Galvanized
INSTALLATION: Use all specified fasteners. Refer to the current *Wood Construction Connectors* catalog for General Notes and warranty information.
NOTE: Pins aligned across the grain may cause splitting if the wood shrinks excessively. Install only in glulam, composite timber (*PSL, LSL and LVL*) or well dried lumber.
CODES: ICBO ER-5537.

Each CJT Kit comes complete with all pins and screws needed. Part numbers:

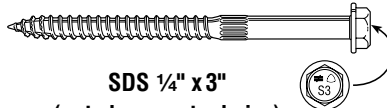
- CJT3S** with 2³/₄" pins **CJT3L** with 4³/₄" pins
CJT4S with 2³/₄" pins **CJT4L** with 4³/₄" pins
CJT5S with 2³/₄" pins **CJT5L** with 4³/₄" pins
CJT6S with 2³/₄" pins **CJT6L** with 4³/₄" pins

Spare pins and screws may be ordered:

- CJTPS** sold in full cartons of ten 1/2" x 2³/₄" pins.
CJTPL sold in full cartons of ten 1/2" x 4³/₄" pins.
SDS¹/₄ x 3-RC10 sold in full cartons of ten self-drilling hex head screws.



1/2" x 2³/₄" or 4³/₄"
Chamfered Steel Pin



SDS 1/4" x 3"
(not shown actual size)

Min. Joist Size	Model No.	Dimensions					Fasteners		Allowable Loads			
		W	H ₁	H ₂	B ₁	B ₂	Screws	Pins	Uplift (133)	Floor (100)	Snow (115)	Roof (125)
DOUGLAS-FIR												
4 x 8	CJT3	2 ³ / ₈	5 ⁹ / ₁₆	4 ⁷ / ₁₆	2 ⁵ / ₈	3 ¹ / ₂	6	3-2 ³ / ₄	1655	1050	1050	1050
								3-4 ³ / ₄	1725	1050	1050	
4 x 10	CJT4	2 ³ / ₈	7	5 ¹⁵ / ₁₆	2 ⁵ / ₈	3 ¹ / ₂	8	4-2 ³ / ₄	2460	2440	2805	2815
								4-4 ³ / ₄	2460	2440	2805	
4 x 12	CJT5	2 ³ / ₈	8 ⁹ / ₁₆	7 ⁷ / ₁₆	2 ⁵ / ₈	3 ¹ / ₂	10	5-2 ³ / ₄	3255	3005	3455	3755
								5-4 ³ / ₄	3490	3070	3530	
4 x 12	CJT6	2 ³ / ₈	10	8 ¹⁵ / ₁₆	2 ⁵ / ₈	3 ¹ / ₂	12	6-2 ³ / ₄	4005	3535	3990	3990
								6-4 ³ / ₄	4775	3535	3990	
GLULAM BEAM												
3 ¹ / ₂ x 7 ¹ / ₂	CJT3	2 ³ / ₈	5 ⁹ / ₁₆	4 ⁷ / ₁₆	2 ⁵ / ₈	3 ¹ / ₂	6	3-2 ³ / ₄	1655	1240	1240	1240
								3-4 ³ / ₄	1725	1240	1240	
3 ¹ / ₂ x 9	CJT4	2 ³ / ₈	7	5 ¹⁵ / ₁₆	2 ⁵ / ₈	3 ¹ / ₂	8	4-2 ³ / ₄	2460	2440	2805	2900
								4-4 ³ / ₄	2460	2440	2805	
3 ¹ / ₂ x 10 ¹ / ₂	CJT5	2 ³ / ₈	8 ⁹ / ₁₆	7 ⁷ / ₁₆	2 ⁵ / ₈	3 ¹ / ₂	10	5-2 ³ / ₄	3255	3005	3455	3755
								5-4 ³ / ₄	3490	3070	3530	
3 ¹ / ₂ x 12	CJT6	2 ³ / ₈	10	8 ¹⁵ / ₁₆	2 ⁵ / ₈	3 ¹ / ₂	12	6-2 ³ / ₄	4005	3535	4065	4420
								6-4 ³ / ₄	4775	3685	4240	
PSL												
3 ¹ / ₂ x 9 ¹ / ₂	CJT3	2 ³ / ₈	5 ⁹ / ₁₆	4 ⁷ / ₁₆	2 ⁵ / ₈	3 ¹ / ₂	6	3-2 ³ / ₄	1655	1840	2115	2160
								3-4 ³ / ₄	1725	2160	2160	
3 ¹ / ₂ x 9 ¹ / ₂	CJT4	2 ³ / ₈	7	5 ¹⁵ / ₁₆	2 ⁵ / ₈	3 ¹ / ₂	8	4-2 ³ / ₄	2460	2145	2145	2145
								4-4 ³ / ₄	2460	2145	2145	
3 ¹ / ₂ x 9 ¹ / ₂	CJT5	2 ³ / ₈	8 ⁹ / ₁₆	7 ⁷ / ₁₆	2 ⁵ / ₈	3 ¹ / ₂	10	5-2 ³ / ₄	3255	3005	3455	3755
								5-4 ³ / ₄	3490	3070	3530	
3 ¹ / ₂ x 11 ⁷ / ₈	CJT6	2 ³ / ₈	10	8 ¹⁵ / ₁₆	2 ⁵ / ₈	3 ¹ / ₂	12	6-2 ³ / ₄	4005	3535	4065	4420
								6-4 ³ / ₄	4775	3685	4240	

- The joist/beam may be sloped as much as 45° with full table loads.
- Center pin within beam. Short pin for use with 3¹/₂ Glulam Beam, 4x sawn lumber or 3¹/₂ PSL.
Long pin for use with 5¹/₂ Glulam Beam, 6x sawn lumber or greater widths.

800-999-5099
www.strongtie.com

© 2008
Simpson Strong-Tie Company Inc.

Printed in the U.S.A.

T-CJT07 12/07 exp. 1/10

CJT KIT *Concealed Joist Tie Kit*

SIMPSON

Strong-Tie

®

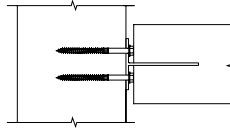
Installation:

- Tools required:**
- 10" diameter circular saw
 - Drill press recommended; or high power, low speed drill (5 amp+) with drill guide.
 - 1/2" diameter drill
 - 3/8" hex driver

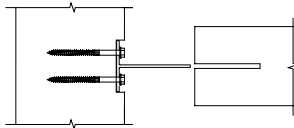
- Optional:**
- Router

Top View of Installation:

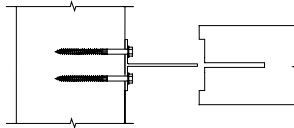
NO ROUTING –
3/8" gap between header/post and beam



ROUTED HEADER/POST –
No gap between header/post and beam

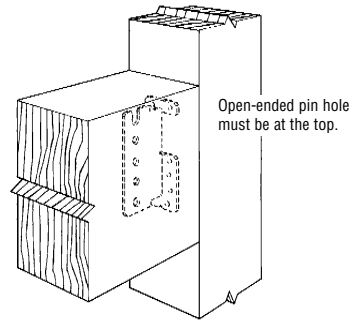


ROUTED BEAM –
No gap between header/post and beam.

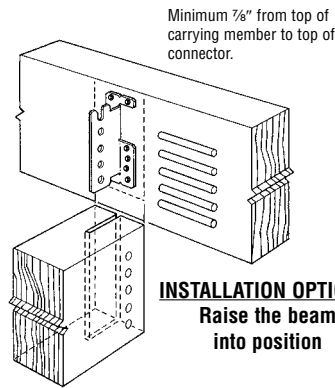


Installation Procedure:

1. **Drill pin holes in beam –**
Position connector on the side of the beam to locate and mark pin holes. If routing into the header/post or beam, allow for 3/8" routing depths. If not routing, add 1/4" for screw heads. Drill clean 1/2" holes exactly perpendicular to the beam.
2. **Optional routing –**
If routing header/post or beam for no gap, use connector as a template. Routing must be 3/8" deep.
3. **Attach connector to header/post –**
Position the connector at the predetermined height and attach it using the SDS1/4 x 3 screws provided in all holes. Pre-drilling may be helpful in hard woods.
4. **Cut slot in beam –**
Using a 10" circular blade, cut a slot in the center of the beam to the full depth (3 3/4") of the blade.
5. **Position beam –**
Install a pin in the uppermost hole, center pin within the beam. Then lower the beam to the connector and insert the remaining pins centered within the beam. Or, raise the beam to the connector and then insert all the pins centered within the beam.
6. **Optional finishing –**
Fill ends of pin holes and slot with dowels or putty.



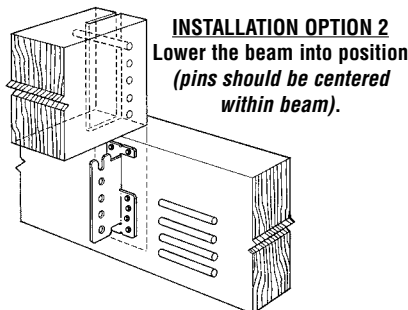
CJT5 Installed on a Post
(installed on a header similar).



INSTALLATION OPTION 1
Raise the beam into position

WARNING

Take special care installing this connector. The beam must be installed perpendicular to the support member.
The connection's components may be damaged if the beam is rotated from its opposite end during or after installation.
Damaged components may not be noticeable and may reduce the connector's load-carrying capacity.



INSTALLATION OPTION 2
Lower the beam into position
(pins should be centered within beam).

This bulletin is effective until January 31, 2010, and reflects information available as of December 1, 2007. This information is updated periodically and should not be relied upon after January 31, 2010; contact Simpson for current information and limited warranty or see www.strongtie.com.

Home Office
5956 W. Las Positas Blvd.
Pleasanton, CA 94588
FAX: 925/847-1603

Northwest U.S.A.
5151 S. Airport Way
Stockton, CA 95206
FAX: 209/234-3868

Southwest U.S.A.
260 N. Palm Street
Brea, CA 92821
FAX: 714/871-9167

Northeast U.S.A.
2600 International Street
Columbus, OH 43228
FAX: 614/876-0636

Southeast U.S.A.
2221 Country Lane
McKinney, TX 75069
FAX: 972/542-5379

Eastern Canada
5 Kenview Blvd.
Brampton, ON L6T 5G5
FAX: 905/458-7274

Western Canada
11476 Kingston St.
Maple Ridge, BC V2X 0Y5
FAX: 604/465-0297

Warehouses & Manufacturing:
Eagan, MN; Enfield, CT;
Gallatin, TN; High Point, NC;
Jacksonville, FL; Kent, WA;
Langley, BC

800-999-5099
www.strongtie.com

© 2008
Simpson Strong-Tie Company Inc.
Printed in the U.S.A.

T-CJT07 12/07 exp. 1/10