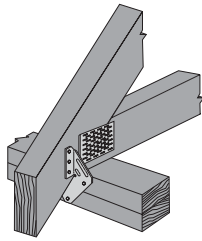


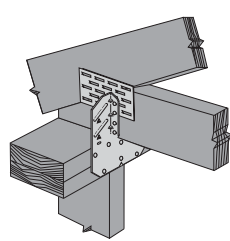
HURRICANE TIES USED FOR TRUSS BEARING ENHANCEMENT

In addition to providing exceptional uplift and lateral capacities, several Simpson Strong-Tie® hurricane ties are also load rated for download to provide additional bearing capacity between the truss and top plates. Similar to our TBE truss bearing enhancer, these connectors transfer load from the truss to the plates and can be used in place of nail-on bearing blocks to increase the bearing capacity.

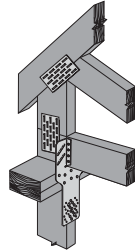
The tables in this bulletin list the allowable download for the connector alone, as well as the allowable download of the connector combined with the wood bearing capacity of 2x4 or 2x6 top plates (full bearing on the wall is required). Refer to the installation figures for required fasteners. See page 2 for multi-ply trusses.



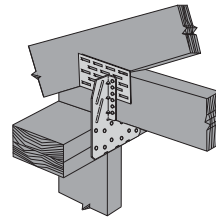
H1 Installation
Truss: (6) 8dx1 ½"
Plates: (4) 8d
or (10) Strong Drive® SD screws



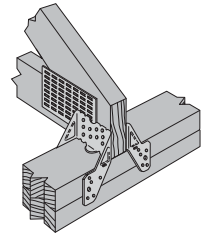
H10 Installation
Truss: (8) 8dx1 ½"
Plates: (8) 8dx1 ½"
or (16) Strong Drive® SD screws
H10A Installation
Truss: (9) 10dx1 ½"
Plates: (9) 10dx1 ½"



H10S Installation
Truss: (8) 8dx1 ½"
Plates: (8) 8dx1 ½"
Studs: (8) 8d



H14 Installation
Truss: (12) 8dx1 ½"
Plates: (13) 8d

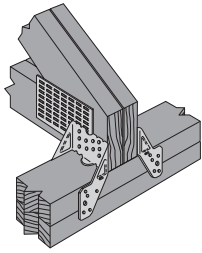


TBE4/TBE6 Installation on Single-Ply Truss
(TBE is installed in pairs)
Truss: (20) 10dx1 ½"
Plates: (20) 10dx1 ½"

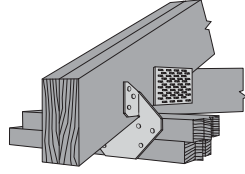
Model No.	Wall Top Plate ³	Allowable Downloads (lbs.)															
		Douglas Fir-Larch				Southern Pine				Spruce-Pine-Fir				Hem-Fir			
		(100)	(115)	(125)	(160)	(100)	(115)	(125)	(160)	(100)	(115)	(125)	(160)	(100)	(115)	(125)	(160)
Single-Ply Truss																	
H1	Part Only	395	450	485	605	425	485	525	655	340	385	415	520	345	395	425	535
	2x4	3675	3730	3765	3885	3390	3450	3490	3620	2570	2615	2645	2750	2470	2520	2550	2660
	2x6	5550	5605	5640	5760	5085	5145	5185	5315	3845	3890	3920	4025	3685	3735	3765	3875
H10 / H10S	Part Only	790	895	895	895	810	810	810	810	610	610	610	610	580	580	580	580
	2x4	4070	4175	4175	4175	3775	3775	3775	3775	2840	2840	2840	2840	2705	2705	2705	2705
	2x6	5945	6050	6050	6050	5470	5470	5470	5470	4115	4115	4115	4115	3920	3920	3920	3920
H10A	Part Only	895	895	895	895	810	810	810	810	610	610	610	610	580	580	580	580
	2x4	4175	4175	4175	4175	3775	3775	3775	3775	2840	2840	2840	2840	2705	2705	2705	2705
	2x6	6050	6050	6050	6050	5470	5470	5470	5470	4115	4115	4115	4115	3920	3920	3920	3920
H14	Part Only	1205	1370	1475	1655	1310	1485	1495	1495	1035	1125	1125	1125	1060	1070	1070	1070
	2x4	4485	4650	4755	4935	4275	4450	4460	4460	3265	3355	3355	3355	3185	3195	3195	3195
	2x6	6360	6525	6630	6810	5970	6145	6155	6155	4540	4630	4630	4630	4400	4410	4410	4410
TBE4	Part Only	1820	2095	2230	2230	1820	2095	2230	2230	1560	1795	1950	2080	1560	1795	1950	2080
	2x4	5100	5375	5510	5510	4785	5060	5195	5195	3790	4025	4180	4310	3885	3920	4075	4205
TBE6	2x6	6975	7250	7430	7580	6480	6755	6935	7085	5065	5300	5455	5585	4900	5135	5290	5420

1. Refer to the installation figures for required fasteners. NAILS: 16d sinker = 0.148" dia. x 3 ¼" long, 10d = 0.148" dia. x 3" long, 10dx1 ½ = 0.148" dia. x 1.5" long, 8d = 0.131" dia. x 2 ½" long, 8dx1 ½ = 0.131" dia. x 1 ½" long.
2. For uplift and lateral load capacities, and information on evaluating connectors that are loaded simultaneously in more than one direction, refer to the current *Wood Construction Connectors* catalog.
3. Where noted as "Part Only," allowable loads are for the connector only. Otherwise, the allowable loads are for the connector and bearing capacity of the wall combined. Loads are based on full wood bearing between the truss and top plates (i.e., 3 ½" bearing length on 2x4 wall and 5 ½" bearing length on 2x6 wall).
4. Allowable loads have been increased for load duration effects, no further increase is allowed.
5. Allowable loads for the part only are determined by the lower of fastener shear calculations or tests of the connectors based on a maximum deflection limit of 1/8". The attached wood members must be designed to withstand the loads imposed by nails.
6. For cases where the truss and top plates are of different species, the lower values from the table shall be used.
7. For connectors approved for use with the Strong-Drive® SD structural-connector screw, the tabulated downloads apply to installations with approved SD screw substitutions. Refer to www.strongtie.com/sd for a list of approved connectors.

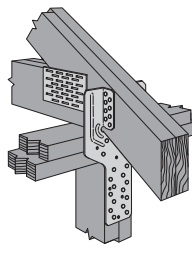
HURRICANE TIES USED FOR TRUSS BEARING ENHANCEMENT



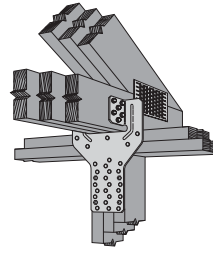
TBE4/TBE6 Installation on 2-Ply, 3-Ply or 4-Ply Truss
 (TBE is installed in pairs)
 Truss: (20) 10d
 Plates: (20) 10d



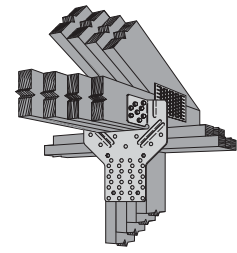
H10-2 Installation
 Truss: (6)10d
 Plates: (6)10d



LGT2 Installation
 Truss: (16) 16d sinker
 Studs: (14) 16d sinker
 [(4) 16d sinker nails in plates required for lateral loads]



LGT3 Installation
 Truss: (12) ¼"x2½" SDS screw
 Plates: (5) 16d sinker
 Studs: (21) 16d sinker
 (Strong-Drive® SDS screws supplied with part)



LGT4 Installation
 Truss: (16) ¼"x3" SDS screw
 Plates: (7) 16d sinker
 Studs: (30) 16d sinker
 (Strong-Drive SDS screws supplied with part)

Model No.	Wall Top Plate ³	Allowable Downloads (lbs.)															
		Douglas Fir-Larch				Southern Pine				Spruce-Pine-Fir				Hem-Fir			
		(100)	(115)	(125)	(160)	(100)	(115)	(125)	(160)	(100)	(115)	(125)	(160)	(100)	(115)	(125)	(160)
2-Ply Truss																	
H10-2	Part Only	710	810	875	1100	770	875	945	1190	610	695	750	915	625	710	765	875
	2x4	7275	7375	7440	7665	6705	6810	6880	7125	5075	5160	5215	5380	4880	4965	5020	5130
	2x6	11025	11125	11190	11415	10095	10200	10270	10515	7625	7710	7765	7930	7310	7395	7450	7560
LGT2	Part Only	1835	2060	2205	2295	1985	2075	2075	2075	1560	1560	1560	1560	1485	1485	1485	1485
	2x4	8400	8625	8770	8860	7920	8010	8010	8010	6025	6025	6025	6025	5740	5740	5740	5740
	2x6	12150	12375	12520	12610	11310	11400	11400	11400	8575	8575	8575	8575	8170	8170	8170	8170
TBE4	Part Only	2220	2230	2230	2230	2220	2230	2230	2230	1920	2100	2100	2100	1920	2100	2100	2100
	2x4	8785	8795	8795	8795	8155	8165	8165	8165	6385	6565	6565	6565	6175	6355	6355	6355
TBE6	2x6	12535	12870	13050	13050	11545	11880	12060	12060	8935	9225	9415	9575	8605	8895	9085	9245
3-Ply Truss																	
TBE4	Part Only	2220	2230	2230	2230	2220	2230	2230	2230	1920	2100	2100	2100	1920	2100	2100	2100
	2x4	12065	12075	12075	12075	11120	11130	11130	11130	8615	8795	8795	8795	8300	8480	8480	8480
TBE6	2x6	17690	18025	18205	18205	16205	16540	16720	16720	12440	12730	12920	13080	11945	12235	12485	12645
LGT3	Part Only	3860	4100	4100	4100	3705	3705	3705	3705	2790	2790	2790	2790	2655	2655	2655	2655
	2x4	13705	13945	13945	13945	12605	12605	12605	12605	9485	9485	9485	9485	9035	9035	9035	9035
	2x6	19330	19570	19570	19570	17690	17690	17690	17690	13310	13310	13310	13310	12680	12680	12680	12680
4-Ply Truss																	
TBE4	Part Only	2220	2230	2230	2230	2220	2230	2230	2230	1920	2100	2100	2100	1920	2100	2100	2100
	2x4	15345	15355	15355	15355	14085	14095	14095	14095	10845	11025	11025	11025	10425	10605	10605	10605
TBE6	2x6	22845	23180	23360	23360	20865	21200	21380	21380	15945	16235	16425	16585	15285	15575	15765	15925
LGT4	Part Only	4100	4100	4100	4100	3705	3705	3705	3705	2790	2790	2790	2790	2655	2655	2655	2655
	2x4	17225	17225	17225	17225	15570	15570	15570	15570	11715	11715	11715	11715	11160	11160	11160	11160
	2x6	24725	24725	24725	24725	22350	22350	22350	22350	16815	16815	16815	16815	16020	16020	16020	16020

1. Refer to the footnotes on page 1.
 2. Allowable loads for LGT3 and LGT4 also apply to the narrow versions (LGT3N and LGT4N).

This technical bulletin is effective until June 30, 2013, and reflects information available as of May 1, 2011. This information is updated periodically and should not be relied upon after June 30, 2013; contact Simpson Strong-Tie for current information and limited warranty or see www.strongtie.com.

800-999-5099
www.strongtie.com