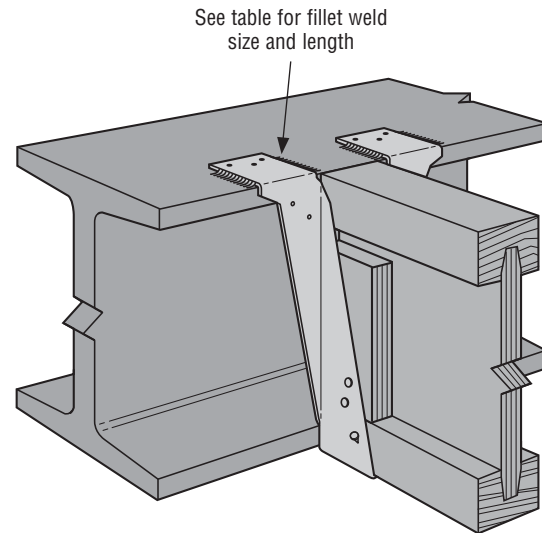


# TOP-FLANGE HANGERS WELDED TO STRUCTURAL STEEL MEMBERS

## INSTALLATION:

- Fill all optional joist nail holes.
- Welds are applied to each side of each top flange.
- Welds start within 1/8" of the front edge of the steel header.
- Weld material shall be E-70xx.
- Weld lengths shown in table are minimum lengths.
- Use web stiffeners designed by others where needed in steel beam.

**CAUTION:** Welding galvanized steel may produce harmful fumes; follow proper welding procedures and safety precautions. Welding should be in accordance with A.W.S. standards.



**LBV weld-on application shown**  
(BA, B and HB similar)

## Top-Flange Hangers Welded to Structural Steel Members

Model No.	Suitable Hanger Sizes	Top-Flange Gauge	Top-Flange Weld Quantity, Size and Length	Joist Nailing	Uplift (160)	Download
LBV	All	14	4 - 1/8" x 2"	6 - 10dx1 1/2"	515	3190
BA	All	14	4 - 1/8" x 2"	8 - 10dx1 1/2"	515	4715
B	Less than 2 1/2" wide	12	4 - 1/8" x 2"	6 - 10dx1 1/2"	515	3640
B	2 1/2" and wider	12	4 - 1/8" x 2"	6 - 16dx2 1/2"	515	4500
HB	Less than 2 1/2" wide	10	4 - 3/16" x 2"	10 - 10dx1 1/2"	1700	5300
HB	2 1/2" and wider	10	4 - 3/16" x 2"	10 - 16dx2 1/2"	1820	6395
WPU	7 1/4" to 18" tall	7	2 - 3/16" x 1 1/2"	6 - 10dx1 1/2"	955	4880
WPU	18 1/2" to 22 1/2" tall	7	2 - 3/16" x 1 1/2"	6 - 10dx1 1/2"	485	4880
WPU	23" to 28" tall	7	2 - 3/16" x 1 1/2"	6 - 10dx1 1/2"	315	4880
HWU	9" to 18" tall	3	2 - 1/4" x 1 1/2"	6 - 10dx1 1/2"	985	6335
HWU	18 1/2" to 22 1/2" tall	3	2 - 1/4" x 1 1/2"	6 - 10dx1 1/2"	765	6335
HWU	23" to 28" tall	3	2 - 1/4" x 1 1/2"	6 - 10dx1 1/2"	635	6335
HWU	18 1/2" to 32" tall	3	2 - 1/4" x 1 1/2"	8 - 10dx1 1/2"	1005	6335
GLT	All	3	2 - 1/4" x 2 1/2"	6 - N54A	1135	8165
GLTV	All	3	2 - 1/4" x 2 1/2"	6 - 16dx2 1/2"	1135	7000
HGLT	All	3	2 - 1/4" x 2 1/2"	6 - N54A	1135	11865
HGLTV	All	3	2 - 1/4" x 2 1/2"	6 - 16dx2 1/2"	1135	10500

1. Uplift loads have been increased for wind or earthquake with no further increase allowed. Reduce where other loads govern.
2. Refer to current Simpson Strong-Tie® *Wood Construction Connectors* catalog for additional relevant information.

*This technical bulletin is effective until January 31, 2013, and reflects information available as of October 1, 2010. This information is updated periodically and should not be relied upon after January 31, 2013; contact Simpson Strong-Tie for current information and limited warranty or see www.strongtie.com.*