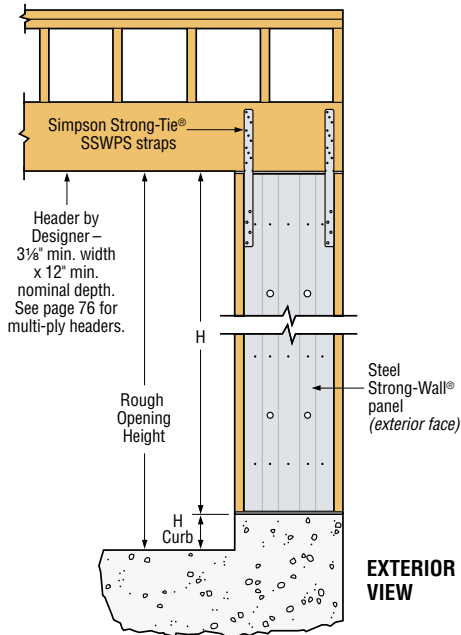


# Steel Strong-Wall®: Garage-Front Application

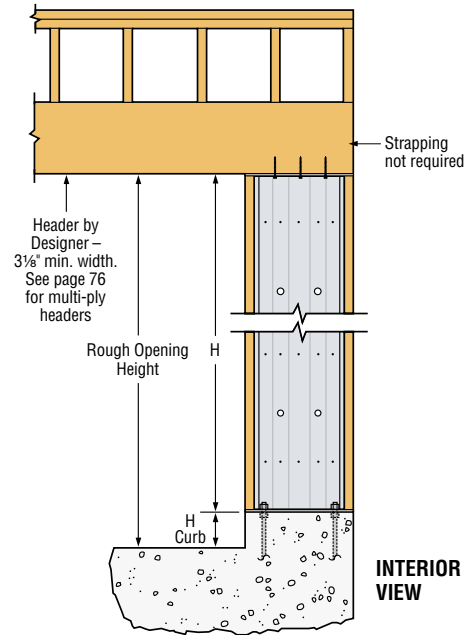
## STEEL STRONG-WALL® – GARAGE PORTAL

See pages 76-77 for installation information.



## STEEL STRONG-WALL® – GARAGE FRONT (NON PORTAL)

See pages 76-77 for installation information.



## STEEL STRONG-WALL® PORTAL MODELS

Model No.	W (in)	H (in)	T (in)	Anchor Bolts		Number of Screws in Top of Wall	Total Wall Weight (lbs)
				Qty.	Dia.		
SSW12x7	12	80	3½	2	¾"	4	74
SSW15x7	15	80	3½	2	1"	6	86
SSW18x7	18	80	3½	2	1"	9	99
SSW12x7.4	12	85½	3½	2	¾"	4	78
SSW15x7.4	15	85½	3½	2	1"	6	91
SSW18x7.4	18	85½	3½	2	1"	9	104
SSW12x8	12	93¼	3½	2	¾"	4	85
SSW15x8	15	93¼	3½	2	1"	6	99
SSW18x8	18	93¼	3½	2	1"	9	113

1. SSWP-KT required for portal models.

## PORTAL FRAME CONNECTION KIT

Model No.	Contents
SSWP-KT	(2) 10 gauge SSWPS straps (8) #14x1 self-drilling screws, Installation instructions

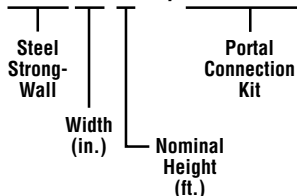
## GARAGE HEADER ROUGH OPENING HEIGHT

Model No.	H Curb	Rough Opening Height
SSW12x7 SSW15x7 SSW18x7	5½"	7'-1½"
	6"	7'-2"
SSW12x7.4 SSW15x7.4 SSW18x7.4	0"	7'-1½"
SSW12x8 SSW15x8 SSW18x8	5½"	8'-2¾"
	6"	8'-3¼"

1. The height of the garage curb above the garage slab is critical for rough header opening at garage return walls.
2. Shims are not provided with Steel Strong-Wall®.
3. Furring down garage header may be necessary for correct rough opening height.

## NAMING SCHEME

### SSW12x7 w/SSWP-KT

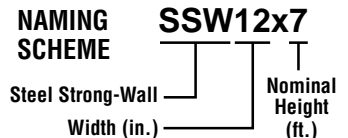


## STEEL STRONG-WALL® STANDARD MODELS

Model No.	W (in)	H (in)	T (in)	Anchor Bolts		Number of Screws in Top of Wall	Total Wall Weight (lbs)
				Qty.	Dia.		
SSW12x7	12	80	3½	2	¾"	4	74
SSW15x7	15	80	3½	2	1"	6	86
SSW18x7	18	80	3½	2	1"	9	99
SSW21x7	21	80	3½	2	1"	12	117
SSW24x7	24	80	3½	2	1"	14	127
SSW12x7.4	12	85½	3½	2	¾"	4	78
SSW15x7.4	15	85½	3½	2	1"	6	91
SSW18x7.4	18	85½	3½	2	1"	9	104
SSW21x7.4	21	85½	3½	2	1"	12	122
SSW24x7.4	24	85½	3½	2	1"	14	134
SSW12x8	12	93¼	3½	2	¾"	4	85
SSW15x8	15	93¼	3½	2	1"	6	99
SSW18x8	18	93¼	3½	2	1"	9	113
SSW21x8	21	93¼	3½	2	1"	12	132
SSW24x8	24	93¼	3½	2	1"	14	144
SSW12x9	12	105¼	3½	2	¾"	4	94
SSW15x9	15	105¼	3½	2	1"	6	110
SSW18x9	18	105¼	3½	2	1"	9	125
SSW21x9	21	105¼	3½	2	1"	12	147
SSW24x9	24	105¼	3½	2	1"	14	160
SSW12x10	12	117¼	3½	2	¾"	4	104
SSW15x10	15	117¼	3½	2	1"	6	121
SSW18x10	18	117¼	3½	2	1"	9	138
SSW21x10	21	117¼	3½	2	1"	12	162
SSW24x10	24	117¼	3½	2	1"	14	177
SSW15x11	15	129¼	5½	2	1"	6	148
SSW18x11	18	129¼	5½	2	1"	9	167
SSW21x11	21	129¼	5½	2	1"	12	193
SSW24x11	24	129¼	5½	2	1"	14	209

1. Garage rough opening height is panel height (H) plus curb height.
2. Furring down garage header may be necessary for correct rough opening height.

## NAMING SCHEME



# Wood Strong-Wall®: Garage-Front Application



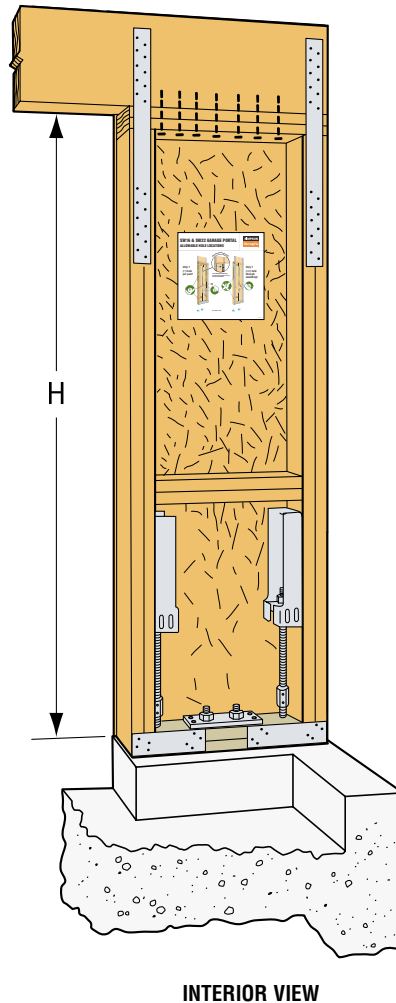
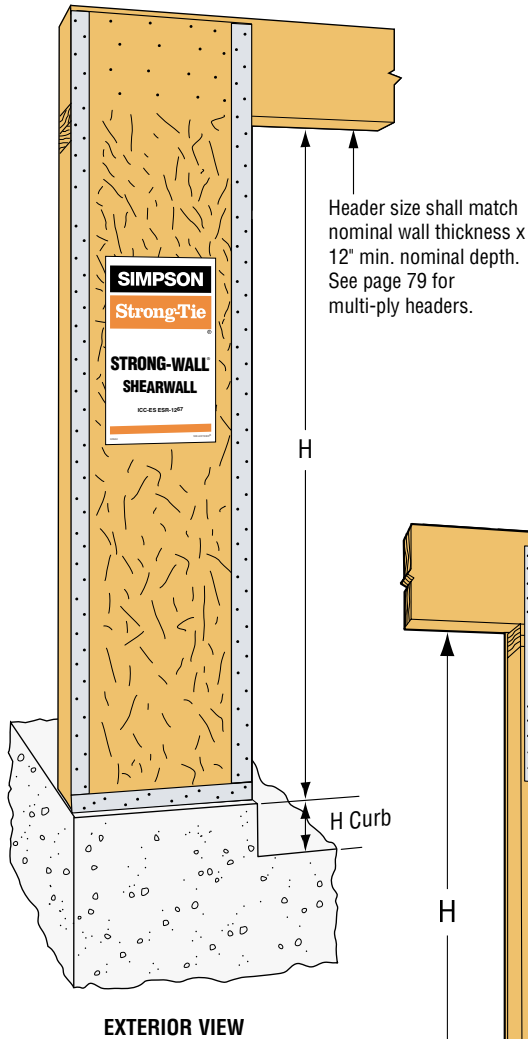
## WOOD STRONG-WALL® – GARAGE PORTAL

See pages 76, 79-80 for installation information.

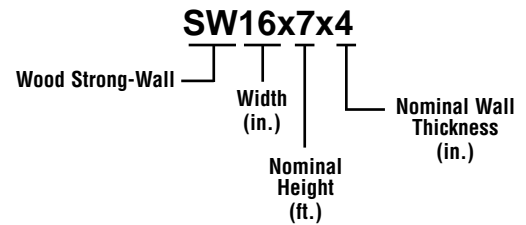
## WOOD STRONG-WALL® PORTAL MODELS

Model No.	W (in)	H (in)	T (in)	Number of Fasteners in Top of Wall	Mudsill Anchors <sup>1</sup>		Holddown Anchor Bolts	
					Qty.	Dia.	Qty.	Dia.
SW16x7x4	16	78	4	8-SDS ¼"x6"	2	⅝"	2	⅞"
SW16x7x6	16	78	5¾	8-SDS ¼"x6"	2	⅝"	2	⅞"
SW16x8x4	16	90	4	8-SDS ¼"x6"	2	⅝"	2	⅞"
SW16x8x6	16	90	5¾	8-SDS ¼"x6"	2	⅝"	2	⅞"
SW22x7x4	22	78	4	10-SDS ¼"x6"	2	⅝"	2	⅞"
SW22x7x6	22	78	5¾	10-SDS ¼"x6"	2	⅝"	2	⅞"
SW22x8x4	22	90	4	10-SDS ¼"x6"	2	⅝"	2	⅞"
SW22x8x6	22	90	5¾	10-SDS ¼"x6"	2	⅝"	2	⅞"

1. Recommended minimum ⅝"x12" mudsill anchor embedded 7" or ⅝"x10" all-thread rod (model RFB#5x10) embedded 5" for adhesive installation.



### NAMING SCHEME



### GARAGE HEADER ROUGH OPENING HEIGHT

Model No.	H Curb	Without ½" Shim	With ½" Shim
SW16x7x4 SW22x7x4	6"	7'	7'-½"
SW16x7x6 SW22x7x6	7"	7'-1"	7'-1½"
SW16x8x4 SW22x8x4	6"	8'	8'-½"
SW16x8x6 SW22x8x6	7"	8'-1"	8'-1½"

1. The height of the garage curb above the garage slab is critical for rough header opening on portal walls.
2. One ½" shim is provided with garage portal walls.