

TECHNICAL BULLETIN

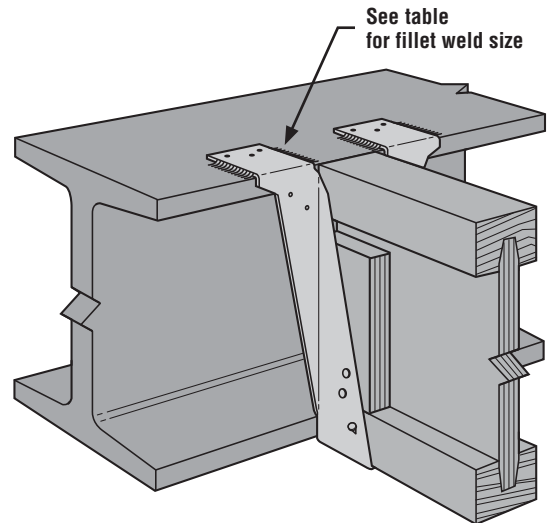


**TOP FLANGE HANGERS
WELDED TO STRUCTURAL STEEL MEMBERS**

Top flange hangers welded to structural steel members have now been evaluated for uplift values.

INSTALLATION:

- Fill all optional joist nail holes.
- Welds are applied to each side of each top flange.
- Weld material shall be E-70S.
- Weld lengths shown in table are minimum lengths.
- Use web stiffeners designed by others where needed in steel beam.
- Do not use powder actuated fasteners to attach hangers to structural steel members.



LBV weld-on application shown (BA, B and HB similar)

CAUTION: Welding galvanized steel may produce harmful fumes; follow proper welding procedures and safety precautions. Welding should be in accordance with A.W.S. standards.

Top Flange Hangers Welded to Structural Steel Members

Model No.	Suitable Hanger Sizes	Top Flange Gauge	Top Flange Fillet Weld Qty and Size	Joist Nailing	Uplift		Download
					133	160	
LBV	All	14	4 – 1/8" x 2"	6 – 10d x 1 1/2"	515	515	3190
BA	All	14	4 – 1/8" x 2"	8 – 10d x 1 1/2"	515	515	4715
B	Less than 2 1/2" wide	12	4 – 1/8" x 2"	6 – 10d x 1 1/2"	515	515	3640
B	2 1/2" and wider	12	4 – 1/8" x 2"	6 – 16d x 2 1/2"	515	515	4500
HB	Less than 2 1/2" wide	10	4 – 3/16" x 2"	10 – 10d x 1 1/2"	1490	1700	6395
HB	2 1/2" and wider	10	4 – 3/16" x 2"	10 – 16d x 2 1/2"	1820	1820	6395
WPU	7 1/4" to 18" tall	7	2 – 3/16" x 1 1/2"	6 – 10d x 1 1/2"	830	955	4880
WPU	18 1/2" to 22 1/2" tall	7	2 – 3/16" x 1 1/2"	6 – 10d x 1 1/2"	485	485	4880
WPU	23" to 28" tall	7	2 – 3/16" x 1 1/2"	6 – 10d x 1 1/2"	315	315	4880
HWU	9" to 18" tall	3	2 – 1/4" x 1 1/2"	6 – 10d x 1 1/2"	850	985	6335
HWU	18 1/2" to 22 1/2" tall	3	2 – 1/4" x 1 1/2"	6 – 10d x 1 1/2"	765	765	6335
HWU	23" to 28" tall	3	2 – 1/4" x 1 1/2"	6 – 10d x 1 1/2"	635	635	6335
HWU	28 1/2" to 32" tall	3	2 – 1/4" x 1 1/2"	8 – 10d x 1 1/2"	1005	1005	6335
GLT / GLTV	All	3	2 – 1/4" x 2 1/2"	6 – 16d x 2 1/2"	1135	1135	7500
HGLT / HGLTV	All	3	2 – 1/4" x 2 1/2"	6 – 16d x 2 1/2"	1135	1135	10500

This bulletin is effective until ~~January 31, 2009~~, and reflects information available as of April 1, 2007. This information is updated periodically and should not be relied upon after ~~January 31, 2009~~; contact Simpson for current information and limited warranty or see www.strongtie.com.

Home Office
5956 W. Las Positas Blvd.
Pleasanton, CA 94588
FAX: 925/847-1603

Southwest U.S.A.
260 N. Palm Street
Brea, CA 92821
FAX: 714/871-9167

Southeast U.S.A.
2221 Country Lane
McKinney, TX 75069
FAX: 972/542-5379

Western Canada
11476 Kingston St.
Maple Ridge, BC V2X 0Y5
FAX: 604/465-0297

Northwest U.S.A.
5151 S. Airport Way
Stockton, CA 95206
FAX: 209/234-3868

Northeast U.S.A.
2600 International Street
Columbus, OH 43228
FAX: 614/876-0636

Eastern Canada
5 Kenview Blvd.
Brampton, ON L6T 5G5
FAX: 905/458-7274

Warehouses & Manufacturing:
Egan, MN; Enfield, CT; Gallatin, TN;
High Point, NC; Jacksonville, FL;
Kent, WA; Langley, BC

800-999-5099
www.strongtie.com

© 2007 Simpson Strong-Tie Company Inc.
Printed in the U.S.A.

T-WELDUPFLT07-R 4/07 exp. 1/09 **12/10**