

## TSB Truss Spacer Bracer

The TSB2 is an innovative product that meets or exceeds current lateral bracing methods.

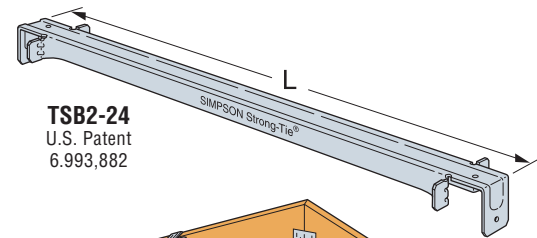
- FEATURES:**
- This is the only product of its type that “captures” the on-center spacing of the trusses, allowing quicker installation.
  - Resists tension and compression loads equal to or greater than BCSI1-03 prescriptive requirements.
  - Does not require any field modification prior to installation.
  - Can be used as Permanent Lateral Bracing and as Temporary Erection Bracing.
  - Has a low profile that can be sheathed over when used as erection bracing, eliminating the need to remove bracing prior to sheathing.

**MATERIAL:** 22 gauge **FINISH:** Galvanized

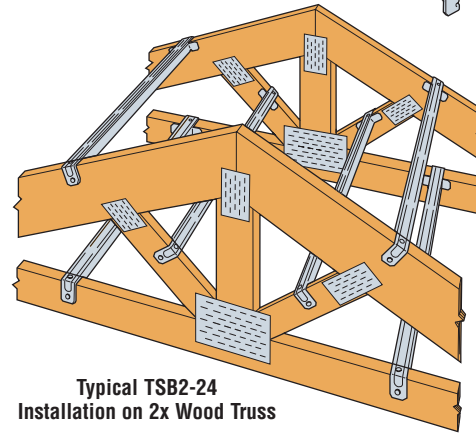
- INSTALLATION:**
- Use all specified fasteners; see General Notes.
  - Tube shape is good for compression and tension.

Model No.	Fasteners	L (in)	Factored Resistance ( $K_D=1.15$ )			
			D. Fir-L		S-P-F	
			Compression	Tension	Compression	Tension
			lbs	lbs	lbs	lbs
			kN	kN	kN	kN
TSB2-16	4-10d $\times$ 1½	17½	810	550	575	390
			3.61	2.45	2.56	1.74
TSB2-24	4-10d $\times$ 1½	25½	810	550	575	390
			3.61	2.45	2.56	1.74

1. No load duration increase allowed.
2. **NAILS:** 10d $\times$ 1½ = 0.148" dia. x 1½" long. See page 16-17 for other nail sizes and information.



**TSB2-24**  
U.S. Patent  
6.993,882



Typical TSB2-24  
Installation on 2x Wood Truss

## TBD20 Diagonal Truss Bracer

The TBD20 is a temporary truss bracing strap system used in conjunction with TSB2 to meet or exceed BCSI1-03 recommendations. When installed on the top and bottom, TBD20 captures the top and bottom truss chords lateral construction and wind forces delivered by TSB2 and transfers them diagonally in tension to the edge of the braced truss system.

- FEATURES:**
- Higher capacity for wind applications than traditional wood lateral systems.
  - Strap clip system introduces innovative single and double shear combination to achieve higher capacity.
  - Has a low profile that can be sheathed over, eliminating the need to remove bracing prior to sheathing.
  - TBD20 and TSB2, sheathed over, can be a supplemental permanent bracing system to the roof sheathing.

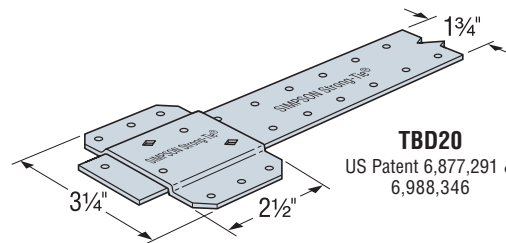
**MATERIAL:** 20 gauge

**FINISH:** Galvanized

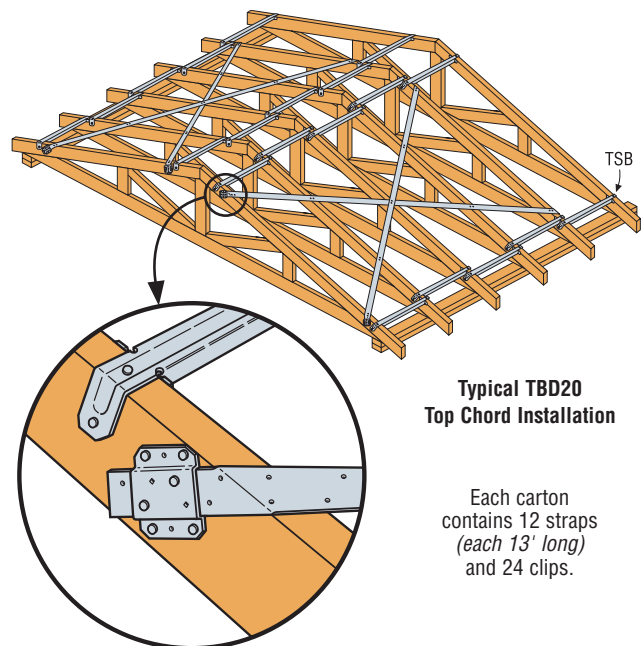
- INSTALLATION:**
- Use all specified fasteners; see General Notes.
  - TBD20 straps span diagonally at approximately 45° between parallel TSB-2 bracers.
  - Strap shall not be slack, but tight and ready to engage in tension.
  - TBD20 tension straps shall be installed for each direction, thus creating an X-bracing system.
  - To resist construction forces, refer to BCSI1-03 for location and frequency of X-braced sections.
  - To resist wind forces, the designer of record shall evaluate the structure to determine the location and frequency of X-braced sections.
  - For wind applications, solid blocking between X-braced trusses with LPT5 or RBC to top plate and H2.5 or H2.5A at each strap clip end from truss to top plate are recommended to resist lateral and uplift forces respectively.
  - Design of lateral and vertical load path to deliver forces to ground is by Designer of Record.

Model No.	Fasteners		Factored Tensile Resistance $T_r$ ( $K_D=1.15$ )	
	Strap End & Bracket <sup>2</sup>	At Intermediate Trusses	D. Fir-L	S-P-F
			lbs	lbs
			kN	kN
TBD20	6-10d $\times$ 1½	1-10d $\times$ 1½	1085	780
			4.83	3.47

1. Factored tensile resistances have been increased 15% for wind loading with no further increase allowed.
2. 4-10d $\times$ 1½" nails at exterior clip section and 2-10d $\times$ 1½" nails at interior clip section. See detail above.
3. **NAILS:** 10d $\times$ 1½ = 0.148" dia. x 1½" long. See page 16-17 for other nail sizes and information.



**TBD20**  
US Patent 6,877,291 &  
6,988,346



Typical TBD20  
Top Chord Installation

Each carton  
contains 12 straps  
(each 13' long)  
and 24 clips.