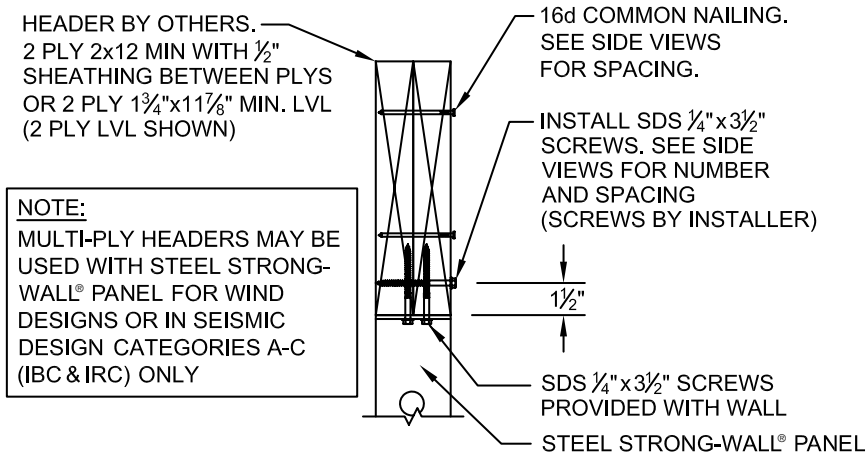
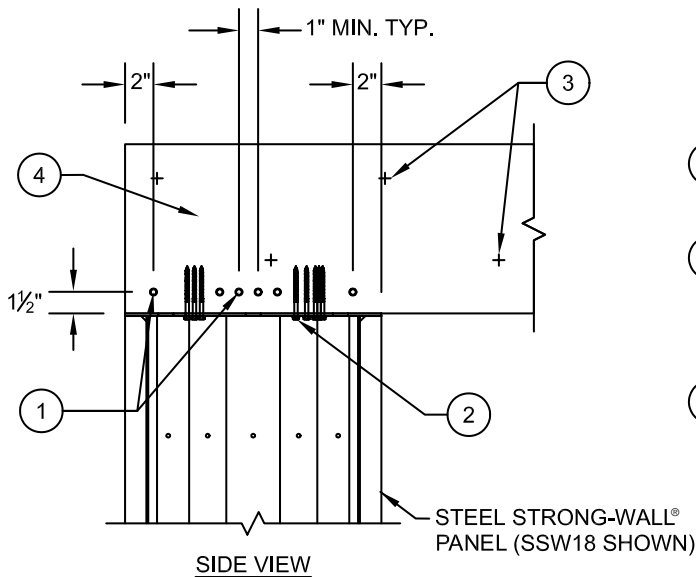


# STEEL STRONG-WALL®: Installation Details



**NOTE:**  
MULTI-PLY HEADERS MAY BE USED WITH STEEL STRONG-WALL® PANEL FOR WIND DESIGNS OR IN SEISMIC DESIGN CATEGORIES A-C (IBC & IRC) ONLY

## SSW MULTI-PLY HEADER CROSS SECTION



- ① INSTALL SDS 1/4" x 3 1/2" SCREWS HORIZONTALLY THROUGH LVL OR 2x LUMBER HEADER PLYS. 4 SCREWS TOTAL FOR SSW12, 6 SCREWS TOTAL FOR SSW15, SSW18, SSW21 AND SSW24
- ② SDS 1/4" x 3 1/2" SCREWS PROVIDED WITH WALL
- ③ FASTEN PLYS TOGETHER WITH 16d COMMON NAILS AT 16" O.C. ALONG EACH EDGE OF BEAM
- ④ 1 5/32" SHEATHING BETWEEN 2x HEADER PLYS SHALL MATCH HEADER DEPTH AND EXTEND FULL WIDTH OF STEEL STRONG-WALL® PANEL, MINIMUM

## SSW WITH MULTI-PLY HEADER

REGISTERED DESIGN PROFESSIONAL IS PERMITTED TO MODIFY DETAILS FOR SPECIFIC CONDITIONS.