



Every day we work hard to earn your business, blending the talents of our people with the quality of our products and services to exceed your expectations. This is our pledge to you.

STRONG-WALL® SELECTOR SOFTWARE

Now Simpson Strong-Tie has a tool that helps design professionals select an appropriate Wood or Steel Strong-Wall® shearwall system!

OPTIMIZED SOLUTION

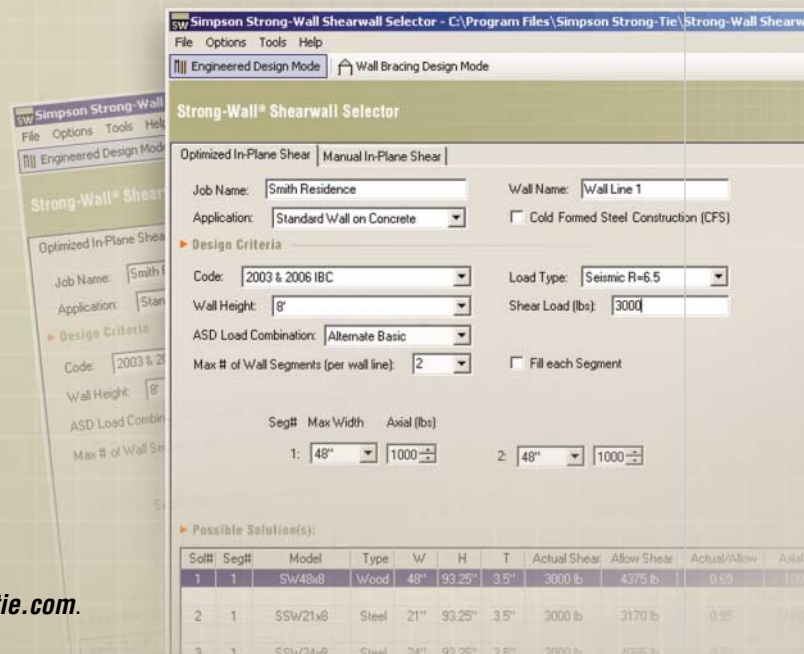
Provides the most cost effective Strong-Wall solution based on the input shear load.

MANUAL SOLUTION

Allows designers to choose which type and number of walls meet their requirements.

- ◆ Easy to use software – free of charge!
- ◆ Finds lowest cost solution
- ◆ Provides actual drift and uplift values
- ◆ Includes new wall-bracing solutions
- ◆ Provides solutions for different model Codes
- ◆ Includes new anchorage solutions
- ◆ Saves, exports, and prints solutions
- ◆ Software updates automatically

You can download the Strong-Wall Selector Software at www.strongtie.com.



Home Office
5956 W. Las Positas Blvd.
Pleasanton, CA 94588
Tel: 925/560-9000
Fax: 925/847-1603

Northwest USA
5151 S. Airport Way
Stockton, CA 95206
Tel: 209/234-7775
Fax: 209/234-3868

Southwest USA
260 N. Palm Street
Brea, CA 92821
Tel: 714/871-8373
Fax: 714/871-9167

Northeast USA
2600 International St.
Columbus, OH 43228
Tel: 614/876-8060
Fax: 614/876-0636

Southeast USA
2221 Country Lane
McKinney, TX 75069
Tel: 972/542-0326
Fax: 972/542-5379

Quik Drive® Factory
375 N. Belvedere Drive
Gallatin, TN 37066
Tel: 888/487-7845
Fax: 615/451-9806

Eastern Canada
5 Kenview Boulevard
Brampton, ON L6T 5G5
Tel: 905/458-5538
Fax: 905/458-7274

Western Canada
11476 Kingston Street
Maple Ridge, B.C. V2X 0Y5
Tel: 604/465-0296
Fax: 604/465-0297

**Simpson Strong-Tie
Anchor Systems®**
136 Official Road
Addison, IL 60101
Tel: 630/543-2797
Fax: 630/543-7014

Specials Factories
Kent, WA
Eagan, MN

Distribution Centers
Enfield, CT
High Point, NC
Jacksonville, FL
Jessup, MD
Ontario, CA

**International
Facilities**
Please visit our
website for
contact details.