

TSBR Truss Spacer-Restraint

The Simpson Strong-Tie® TSBR truss spacer-restraint is a time-saving lateral-restraint product for wood and CFS framing that improves quality and safety while helping to meet the prescriptive recommendations of the WTCA/TPI. Easier to install than wood bracing, the TSBR firmly grips the trusses, capturing on-center spacing and keeping them vertical and plumb after placement, resulting in a better truss installation. The unique design eliminates additional time spent measuring truss spacing and laying out temporary lateral bracing. And once installed, the TSBR can remain in place to be sheathed over, thereby eliminating the need to remove temporary bracing and creating a safer, more stable work platform.

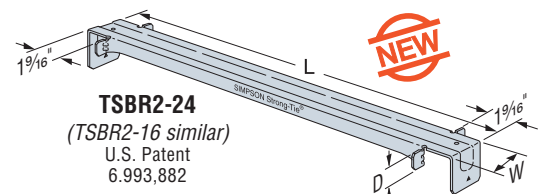
- FEATURES:**
- Enables the quick and accurate spacing of trusses without measuring or adjusting
 - Helps meet prescriptive temporary bracing recommendations of the BCSI
 - Easily “grabs” onto the truss – may be put in place with one hand
 - Stays in place during sheathing, saving time and making the roof more stable for workers
 - Installs in less time and requires less total bracing material than prescriptive wood bracing methods – reducing labor costs
 - The TSBR is a direct replacement for the TSB Truss Spacer Bracer.

MATERIAL: 22 gauge **FINISH:** Galvanized

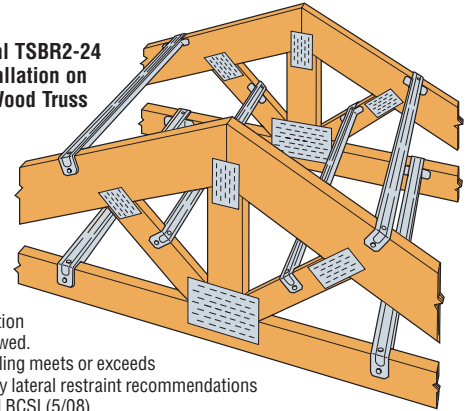
INSTALLATION: • Use all specified fasteners; see General Notes.

- TSBR lateral restraint locations are as recommended in Table B2-1 of WTCA/TPI BCSI or the BCSI B2 Summary Sheet. For more information see the Simpson Strong-Tie Wood Truss Bracing and Restraint Guide (F-TSBR2BD22).

CODES: See page 20 for Code Reference Key Chart.



Typical TSBR2-24 Installation on 2x Wood Truss



1. No load duration increase allowed.
2. Minimum nailing meets or exceeds the temporary lateral restraint recommendations of WTCA/TPI BCSI (5/08).
3. **NAILS:** 10dx1½ = 0.148" dia. x 1½" long, 10d = 0.148" dia. x 3" long. See page 24-25 for other nail sizes and information.

Model No.	Dimensions (in)			Fasteners (Total)	Allowable Loads (lbs)				Code Ref.
	L	W	D		DF/SP		SPF/HF		
					Compression	Tension	Compression	Tension	
TSBR2-16 ² (Min)	17½	1¼	1¼	2-10d	540	180	465	155	160
TSBR2-16 (Max)	17½	1¼	1¼	4-10dx1½"	540	455	465	390	
TSBR2-24 ² (Min)	25½	1¼	1	2-10d	500	180	430	155	
TSBR2-24 (Max)	25½	1¼	1	4-10dx1½"	500	455	430	390	

TBD22 Diagonal Brace

The TBD22 diagonal truss brace offers a time-saving substitute for 2x4 diagonal bracing that helps meet the recommendations of WTCA/TPI BCSI. The TBD travels in a box like a flat strap, and is formed into an A-shape as it is pulled from the carton to provide rigidity and prevent sagging between trusses during installation. As it is fastened to the trusses the brace flattens, allowing sheathing to be installed right over it and saving the time typically needed to remove 2x4 bracing.

When installed on the top and bottom chords as well as the web planes, the TBD captures the lateral construction and wind forces delivered by the TSB truss spacer/bracer and transfers it diagonally in tension to the edge of the braced-truss system. When used in conjunction with the TSB, the TBD22 meets or exceeds the the recommendations set forth by the WTCA/TPI BCSI.

- FEATURES:**
- Helps meet prescriptive temporary bracing recommendations of the WTCA/TPI BCSI.
 - Rigid A-shape design virtually eliminates sagging between trusses spaced 16"-24" on center.
 - Can be sheathed over after installation, no need to remove bracing.
 - Dimpled nailing grid allows installation with standard pneumatic fasteners.
 - 160' of bracing in an easy-to-handle carton.

MATERIAL: 22 gauge **FINISH:** Galvanized

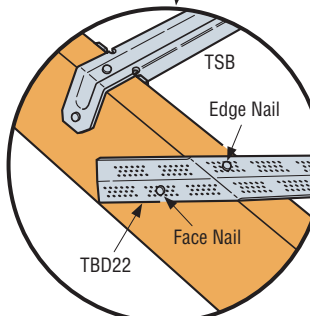
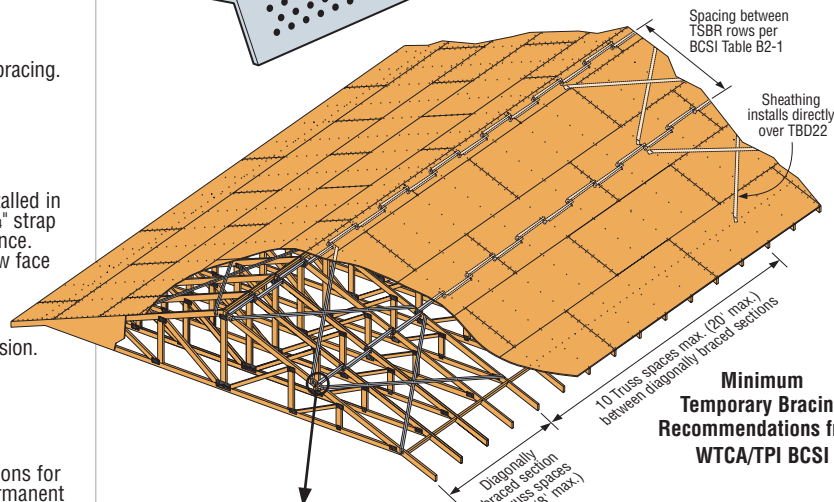
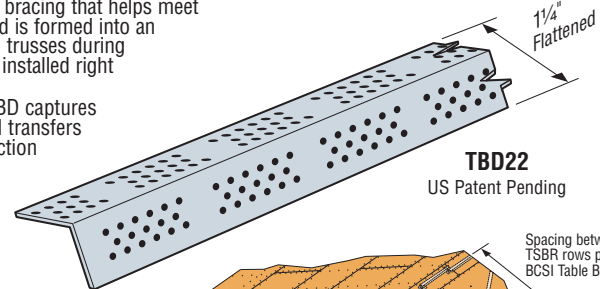
INSTALLATION: • Use all specified fasteners; see General Notes.

- Strap does not have holes for fasteners. Nails shall be installed in the dimpled areas and placed to maintain a minimum of ¼" strap edge distance and a minimum of ½" center to center distance. Nails should be installed in the center of the lumber narrow face and with a minimum edge distance of 1" on the lumber wide face.
- TBD22 straps span diagonally at approximately 45°.
- Strap shall not be slack, but tight and ready to engage in tension.
- To resist construction forces, diagonal X-bracing is required at each end and every 10 truss spaces (20' max). Refer to WTCA/TPI BCSI for additional information.
- At the end of the TBD braces trusses shall be laterally braced to resist out of plane forces.
- Bracing locations shown in the drawing are recommendations for temporary bracing only. Installation of TBD braces for permanent lateral bracing shall be per the Building Designer.

CODES: See page 20 for Code Reference Key Chart.

Model No.	Fasteners		Allowable Tension Loads		Code Ref.
	Strap Ends	Intermediate Trusses	DF/SP	SPF/HF	
TBD22 ² (Min)	1-10dx1½ in face and 1-10dx1½ in edge	1-10dx1½	430	390	170
TBD22 (Max)	2-10dx1½ in face and 1-10dx1½ in edge	1-10dx1½	565	520	

1. Allowable loads have been increased for construction and wind loading with no further increase allowed.
2. Minimum nailing meets or exceeds the temporary bracing recommendations of WTCA/TPI BCSI.
3. **NAILS:** 10dx1½ = 0.148" dia. x 1½" long. See page 24-25 for other nail sizes and information.



Typical TBD22 Top Chord Installation with Minimum Nailing



TBD22 Dispenser Detail