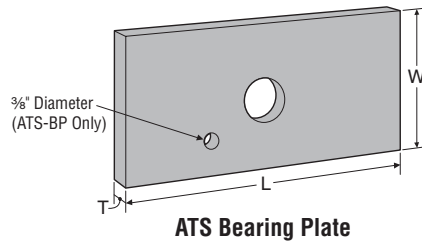


BEARING PLATES

Bearing plates are used to tie down individual levels within the system. They resist incremental bearing loads by spreading forces to minimize crushing of the wood when the system is loaded. DW plates are used when TUDs or weldable cages are specified.

Material: ASTM A36

Finish: BP – Powder Coated
DW – Zinc Plated



Model No.	W (in)	L (in.)	T (in)	Hole Diameter (in)	Component Color Code	Allowable Bearing Capacity			
						DF-L	SP	HF	SPF
ATS-DW5	3	2 ⁷ / ₈	3/4	1 ¹ / ₁₆	Blue	–	–	–	–
ATS-DW7	3	2 ⁷ / ₈	3/4	1 ⁵ / ₁₆	Green	–	–	–	–
ATS-DW9	3	2 ⁷ / ₈	3/4	1 ³ / ₁₆	Orange	–	–	–	–
ATS-DW10	3	2 ⁷ / ₈	3/4	1 ⁵ / ₁₆	Purple	–	–	–	–
ATS-BP5-3X3.5	3	3 ¹ / ₂	3/8	1 ¹ / ₁₆	Blue	6,775	6,125	4,390	4,605
ATS-BP5-3X5.5	3	5 ¹ / ₂	5/8	1 ¹ / ₁₆	Blue	10,540	9,530	6,830	7,165
ATS-BP5-5X5.5	5	5 ¹ / ₂	3/4	1 ¹ / ₁₆	Blue	17,885	16,165	11,590	12,160
ATS-BP7-3X5.5	3	5 ¹ / ₂	5/8	1 ⁵ / ₁₆	Green	10,280	9,290	6,660	6,990
ATS-BP7-5X5.5	5	5 ¹ / ₂	5/8	1 ⁵ / ₁₆	Green	17,620	15,930	11,420	11,985
ATS-BP9-3X5.5	3	5 ¹ / ₂	5/8	1 ³ / ₁₆	Orange	9,950	8,995	6,450	6,765
ATS-BP9-5X5.5	5	5 ¹ / ₂	5/8	1 ³ / ₁₆	Orange	17,295	15,635	11,205	11,760
ATS-BP10-3X9	3	9	1	1 ⁵ / ₁₆	Purple	15,700	14,195	10,175	10,675
ATS-BP10-3X12	3	12	1 ¹ / ₂	1 ⁵ / ₁₆	Purple	21,325	19,280	13,820	14,500
ATS-BP10-3X15	3	15	1 ³ / ₄	1 ⁵ / ₁₆	Purple	26,950	24,365	17,465	18,325
ATS-BP10-5X9	5	9	1	1 ⁵ / ₁₆	Purple	26,950	24,365	17,465	18,325
ATS-BP10-5X12	5	12	1 ¹ / ₂	1 ⁵ / ₁₆	Purple	36,325	32,840	23,540	24,700

1. Bearing area factor, C_b, included in listed capacities.
2. Bearing plate thicknesses are such that allowable capacity is not limited by plate bending.
3. When ATS-BP hole diameter is too large for rod diameter, and Isolator Nut is not used, a DW plate may be used as a washer.

WELDABLE CAGE

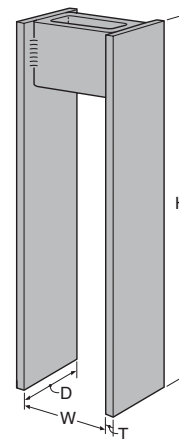
The ATS Weldable Cage is for use on projects where the run is to be anchored to steel beams. Beam design is the responsibility of the Designer.

Material: Side Plates - ASTM A36; Tube - ASTM A500, Grade B

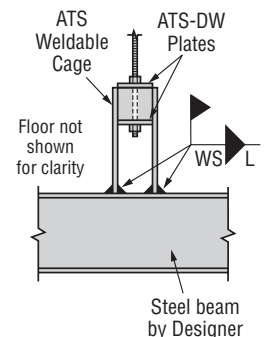
Finish: Gray Paint

Model No.	T Thickness (in)	D Depth (in)	H Height (in)	W Width (in)	WS Min. Weld Size (in)	L Min. Weld Length (in)	Allowable Tensile Capacity		
							AISC 9th Ed.		AISC 13th Ed.
							100	133	(100)
ATS-1/2-2B	3/16	2	16	3	3/16	1 ¹ / ₂	16,200	21,600	16,200
ATS-1/2-2D	1/4	3	16	3	1/4	2 ¹ / ₄	32,400	43,200	32,400
ATS-1/2-2E	3/8	3	16	3	5/16	2 ³ / ₄	48,600	64,800	48,600

1. ATS-1/2 cages are fabricated from A36 material, with F_u = 58,000 psi.
2. 1" maximum rod diameter for ATS-1/2-2B.
3. 1¹/₄" maximum rod diameter for ATS-1/2-2D and ATS-1/2-2E cages.
4. Minimum weld size and length listed are required to develop weldable cage tensile capacities – use E70XX electrodes.
5. No increase permitted on AISC 13th Edition values.



Weldable Cage



Steel Beam Detail