

SSTB Anchor Bolts

The SSTB is designed for maximum performance as an anchor bolt for holdowns and Strong-Wall® shearwalls. Extensive SSTB testing has been done to determine the design load capacity at a common application, the garage stem wall. Design loads are based on recent testing by Simpson Strong-Tie to the new ICC-ES acceptance criteria for cast-in-place proprietary bolts in concrete for light-frame construction (AC 399).

SPECIAL FEATURES:

- Rolled threads for higher tensile capacity.
- Offset angle reduces side-bursting, provides more concrete cover.
- Stamped embedment line aids installation.
- Configuration results in minimum rebar interference.

MATERIAL: ASTM F1554 Grade 36

FINISH: None. May be ordered hot-dip galvanized (HDG); check with Simpson Strong-Tie

INSTALLATION:

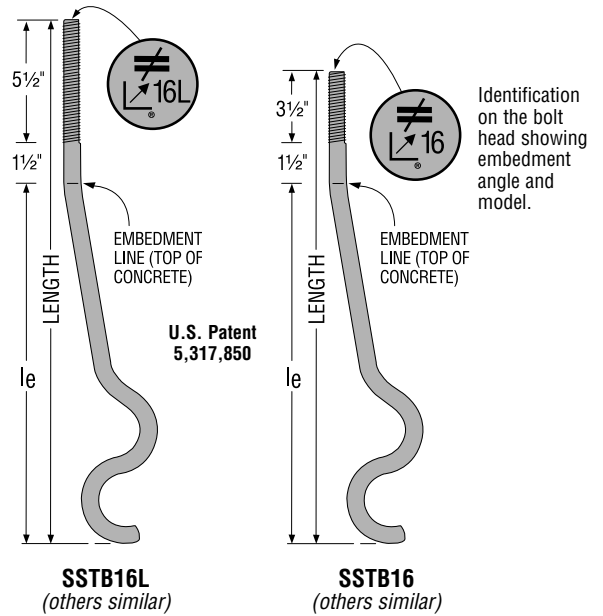
- SSTB is used for monolithic and two-pour installations.
- Nuts and washers are not supplied with the SSTB; install standard nuts, couplers and/or washers as required. On HDG SSTB anchors, chase the threads to use standard nuts or couplers or use overtapped products in accordance with ASTM A563 (*Simpson Strong-Tie NUT^{5/8}-OST, NUT^{7/8}-OST, CNW^{5/8}-5/8OST, CNW^{7/8}-7/8OST*).

REINFORCED CONCRETE FOUNDATION

- Install SSTB before the concrete pour using AnchorMates (*see page 16*). Install the SSTB per plan view detail shown on page 28. Install one #4 rebar 3" to 5" (*may be foundation rebar not post-tension cable*) from the top of the foundation.
- The SSTB does not need to be tied to the rebar.
- Minimum concrete compression strength is 2500 psi. Unless noted otherwise, no special inspection is required for foundation concrete when the structural design is based on concrete no greater than 2500 psi (*IBC Section 1704.4*).
- Unless otherwise noted, do NOT install where: (a) a horizontal cold joint exists within the embedment depth between the slab and foundation wall or footing beneath, unless provisions are made to transfer the load, or the slab is designed to resist the load imposed by the anchor; or (b) slabs are poured over concrete block foundation walls.

REINFORCED CONCRETE BLOCK

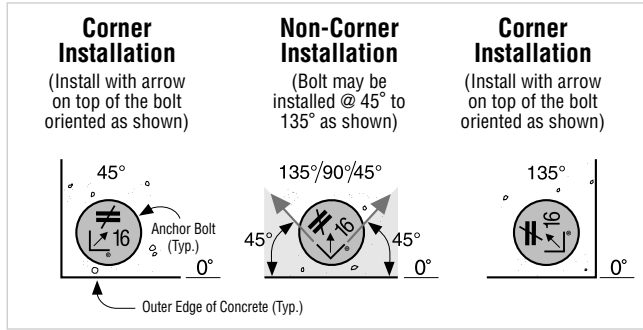
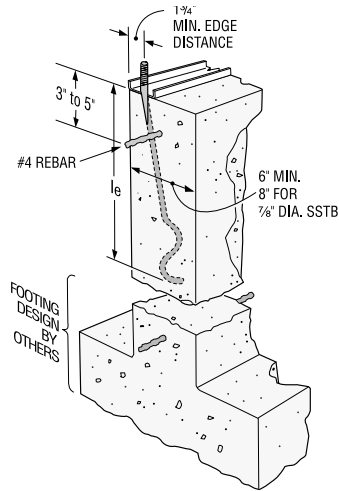
- Before concrete grout is poured, install diagonally at approx. 45° in the cell per plan view detail shown on next page.
- Horizontal #4 rebar (*minimum 56" long centered about the anchor bolt*)—approximately one rebar 12" from the top and two rebars approximately 28" from the top. Vertical #4 rebar (*minimum 24" long*)—install with maximum 24" o.c. spacing.
- Grout all cells with minimum 2000 psi concrete. Vibrate the grout per the International Building Code, Section 2104.1.
- Refer to Simpson Strong-Tie® *Wood Construction Connectors* catalog for allowable tension loads in masonry.



Recent testing by Simpson Strong-Tie to the new ICC-ES Acceptance Criteria for *Cast-In-Place Proprietary Bolts* in concrete for Light-Frame Construction (AC399) has been submitted to ICC-ES for code approval. Reference www.strongtie.com for published load information and new ICC-ES code report with evaluation scope in compliance with the 2006 and 2009 IBC and 2006 and 2009 IRC.

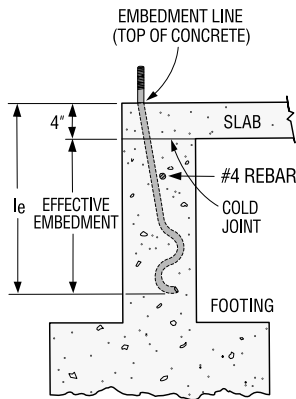
SSTB Anchor Bolts

Anchors

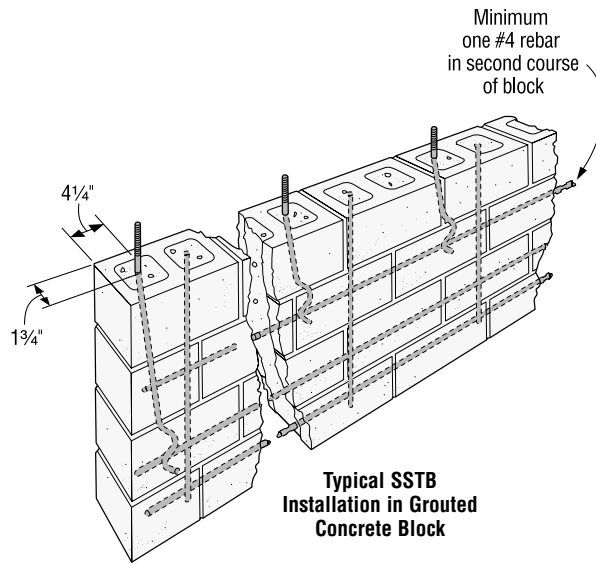


Plan View of SSTB Placement in Concrete Stemwall

Typical SSTB Installation
Maintain minimum rebar cover, per ACI-318 concrete code requirements



Two-Pour Installation
(SSTB20, 24 and 34)



Typical SSTB Installation in Grouted Concrete Block

RFB Retrofit Bolts

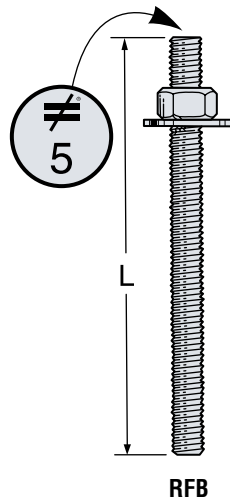
RFBs are clean, pre-cut threaded rod, supplied with nut and washer for use with Simpson Strong-Tie® anchoring adhesives. May be ordered in bulk without the nut and washer. Use with Simpson Strong-Tie anchoring adhesives to anchor into existing concrete and masonry. Offers a complete engineered anchoring system when used with Simpson Strong-Tie anchoring adhesives. Inspection is easy; each end of the threaded rod is stamped with rod length in inches and “No-Equal” symbol for identification after installation.

MATERIAL: A307, Grade C

FINISH: Zinc-Plated, Hot-Dip Galvanized (per ASTM 153). Stainless Steel (RFB#5/8x8SS)

INSTALLATION:

- Request the current *Anchoring and Fastening Systems for Concrete and Masonry* catalog for more information.



These products feature additional corrosion protection. Additional products on this page may also be available with this option, check with Simpson Strong-Tie for details.

Description Dia. Length	Zinc Plated Model No.	Hot-Dip Galvanized Model No.	Ctn Qty	Bulk ¹ Qty	Retail ² Pack
1/2" x 4"	RFB#4x4	RFB#4x4HDG	50	50	—
1/2" x 5"	RFB#4x5	RFB#4x5HDG	50	50	10
1/2" x 6"	RFB#4x6	RFB#4x6HDG	50	50	10
1/2" x 7"	RFB#4x7	RFB#4x7HDG	50	50	10
1/2" x 8"	—	RFB#4x8HDG	—	—	10
1/2" x 10"	RFB#4x10	RFB#4x10HDG	25	—	10
5/8" x 5"	RFB#5x5	RFB#5x5HDG	50	50	10
5/8" x 8"	RFB#5x8	RFB#5x8HDG	50	—	10
5/8" x 10"	RFB#5x10	RFB#5x10HDG	50	—	10
5/8" x 12"	—	RFB#5x12HDG	—	—	10
5/8" x 16"	RFB#5x16	RFB#5x16HDG	25	25	10
3/4" x 10 1/2"	RFB#6x10.5	RFB#6x10.5HDG	25	25	—

- Bulk quantities do not include the nut and washer and must be ordered with a “-B” suffix (example: RFB#4x5-B). Hot-dip galvanized RFB’s not available in bulk.
- Retail Packs must be ordered with a “-R” suffix (example: RFB#5x12HDG-R).