

S/JCT & S/HJCT Steel Joist Hangers

New, improved, higher load-capacity joist hangers. Additional fasteners in the new S/JCT and the increased thickness of the S/HJCT increase the allowable load capacity for use with C-Joists. Joist can be attached from either side or doubled up. This hanger can be used with either steel or wood headers.

MATERIAL: S/JCT- 68 mil (14 ga); S/HJCT- 97 mil (12 ga)

FINISH: Galvanized

INSTALLATION: • Attach hanger with specified fasteners.

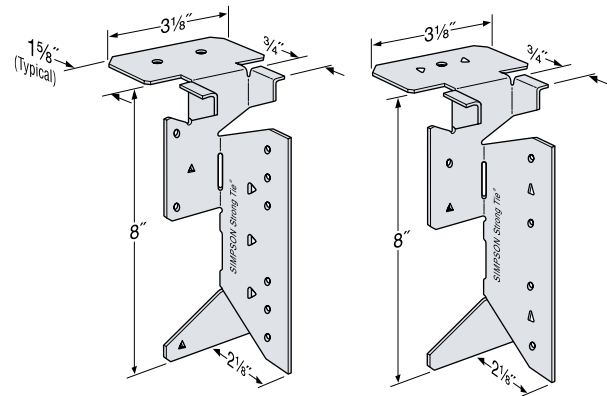
Use round holes for minimum load, use round and triangle holes for maximum load.

- May be used for weld-on applications. The minimum required weld to the top flange is 1/8" x 2 1/2" fillet weld to each side of top flange. Consult the code for special considerations when welding galvanized steel.

FEATURES: • Uni-directional: Joist can be attached from left or right

- One size fits joists 8" through 14" deep.
- Optional holes for additional load capacity.
- Simplicity of design.
- Quick and easy installation.
- Field skewable up to 45° left or right.

CODES: See page 8 for Code Listing Key Chart.



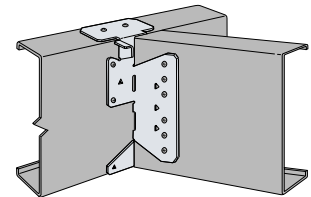
S/HJCT

S/JCT

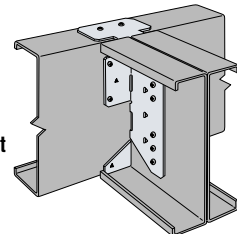
U.S. Patent 6,230,467

Hangers

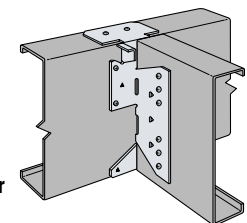
Model No.	Cold-Formed Steel Header					Code Ref.	
	Fasteners			Allowable ASD Loads ¹ 54 mil (16 ga)			
	Top	Face	Joist	Uplift	Down		
Straight Hanger							
S/JCT (min)	1-#10	2-#10	4-#10	940	1195	FC1	
S/JCT (max)	1-#10	4-#10	6-#10	1435	2105		
S/HJCT (min)	2-#10	4-#14	6-#14	1510	2920		
S/HJCT (max)	2-#10	8-#14	9-#14	1670	3855		
Skewed Hanger							
S/JCT (min)	1-#10	2-#10	4-#10	940	1135		
S/JCT (max)	1-#10	4-#10	6-#10	940	1185		
S/HJCT (min)	2-#10	4-#10	6-#14	1510	2305		
Welded Hanger⁶							
S/JCT (min)	1/8" x 2 1/2" fillet weld to each side of top flange		4-#10	-	940		
S/HJCT (min)			4-#14	-	1450		
S/HJCT Skew			4-#14	-	1235		
Attached to Masonry - Straight Hanger							
S/HJCT (min)	2-1/4" x 2-1/4" Titen	4-1/4" x 2-1/4" Titen	6-#14	710	1785	170	



S/HJCT Skewed 45° Installation



S/HJCT Double-Joist Installation



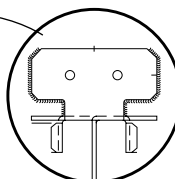
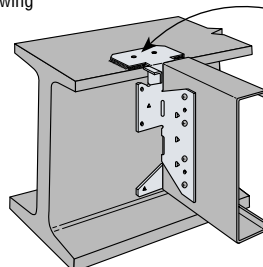
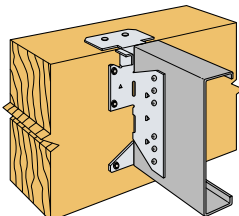
S/HJCT Installation with a CFS steel header

Model No.	Wood Header					Code Ref.	
	Fasteners			Allowable ASD Loads ²			
	Top	Face	Joist	Uplift (160)	Down (100)		
Straight Hanger							
S/JCT (min)	1-10d	2-10d	4-#10	565	945	FC1	
S/JCT (max)	1-10d	4-10d	6-#10	960	1465		
S/HJCT (min)	2-10d	4-SDS 1/4 x 3	6-#14	1210	2625		
S/HJCT (max)	2-10d	8-SDS 1/4 x 3	9-#14	1475	2980		
Skewed Hanger							
S/JCT (min)	1-10d	2-10d	4-#10	395	845		
S/JCT (max)	1-10d	4-10d	6-#10	790	1300		
S/HJCT (min)	2-10d	4-SDS 1/4 x 3	6-#14	1210	1935		

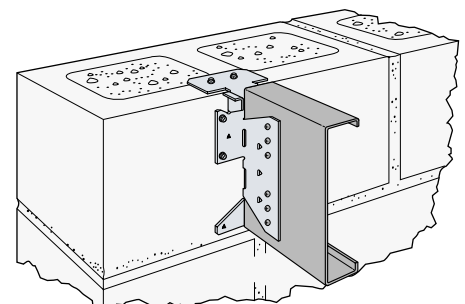
- Allowable loads for CFS headers are based on a single 54 mil (16 ga) steel.
- Allowable loads for wood headers are based on 4x10 minimum DFL, specific gravity = 0.50.
- Steel header must be braced to prevent web buckling per Designer specification.
- Steel joist shall be laterally braced per Designer specification.
- Screws shall be installed using joist hanger holes screwing through the hanger into the joist.

- Backing in the steel beam cavity is not required behind the hanger for loads listed.
- For joists with up to a 0.50" gap (short cut) use an adjustment factor of 0.87.
- For joists with a 0.50" to 0.90" gap (short cut) use an adjustment factor of 0.75.

S/HJCT Installation with a 4x10 wood header



S/HJCT Weld-On Installation with an I-Beam. Install joist's fasteners as shown



S/HJCT Installation on masonry header