

**SSP/DSP/TSP** Stud Plate Ties

The SSP and DSP single- and double-stud plate ties connect single and double studs to top and bottom track. Each can be used for either top- or bottom-track applications.

**MATERIAL:** SSP/DSP—43 mil (18 ga); TSP—54 mil (16 ga)

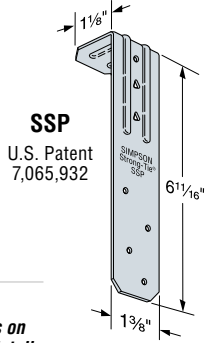
**FINISH:** Galvanized. Some products available in ZMAX®;

see Corrosion Information, page 12–13.

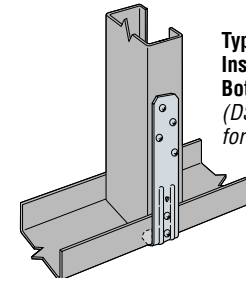
**INSTALLATION:** • Use all specified fasteners; see General Notes.

• DSP/SSP—top track installation—fill all round and triangle holes

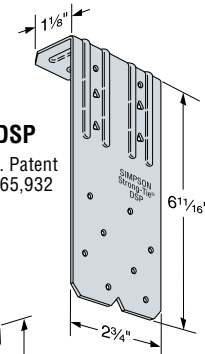
**CODES:** See page 8 for Code Listing Key Chart.



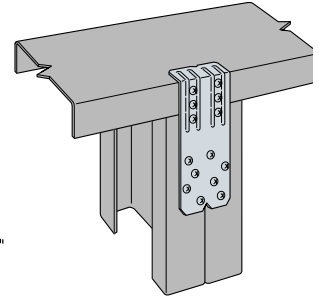
**SSP**  
U.S. Patent  
7,065,932



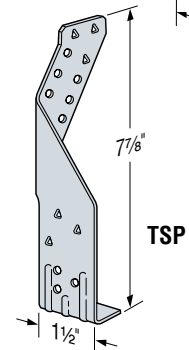
**Typical SSP Installed to Bottom Track**  
(DSP similar for Double Stud)



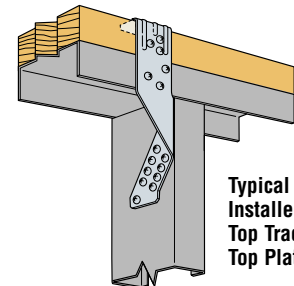
**DSP**  
U.S. Patent  
7,065,932



**Typical DSP Installed to Top Track**  
(SSP similar for Single Stud)



**TSP**



**Typical TSP Installed to Top Track with Top Plate**

These products are available with additional corrosion protection. Additional products on this page may also be available with this option, check with Simpson Strong-Tie for details.

Model No.	Fasteners				Allowable Uplift Loads		Code Ref.
	Studs	Top Track		Bottom Track	33 mil (20ga)	43 mil (18ga)	
		CFS	Wood	CFS			
SSP	4 - #10	—	—	2 - #10	355	625	FC1
		—	2 - #10	—	340	600	
		2 - #10 <sup>3</sup>	1 - #10	—	405 <sup>1</sup>	715 <sup>1</sup>	
		2 - 10d	1 - #10	—	480 <sup>1</sup>	840 <sup>1</sup>	
DSP	8 - #10	—	—	4 - #10	430	695	
		—	4 - #10	—	475	775	
		4 - #10 <sup>3</sup>	2 - #10	—	585 <sup>1</sup>	955 <sup>1</sup>	
		4 - 10d	2 - #10	—	730 <sup>1</sup>	1200 <sup>1</sup>	
TSP	6 - #10	—	—	3 - #10	345	645	
		—	3 - #10	—	370	700	
		3 - #10 <sup>3</sup>	3 - #10	—	360 <sup>1</sup>	685 <sup>1</sup>	
		3 - 10d	3 - #10	—	480 <sup>1</sup>	905 <sup>1</sup>	

1. For wood plates, noted values only apply to DF/SP members where wood top plates are used. For SPF values, multiply by 0.86.
2. For wood plates, when cross-grain tension cannot be avoided, mechanical reinforcement to resist such forces should be considered.
3. Screws installed into wood plates with a minimum #10x¾".

Straps & Ties

**SP** Stud Plate Ties



The SP stud plate tie is a plate-to-stud connection providing uplift resistance.

**MATERIAL:** See table

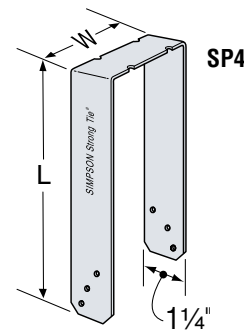
**FINISH:** Galvanized. Available with ZMAX® coating; see Corrosion Information, page 12–13.

**INSTALLATION:** • Use all specified fasteners.

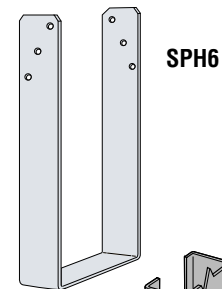
**CODES:** See page 8 for Code Listing Key Chart.

Available with additional corrosion protection. Check with Simpson Strong-Tie.

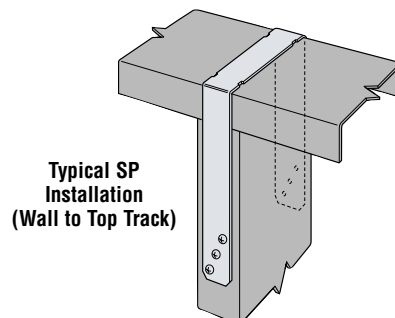
Model No.	Connector Material Thickness mil (ga)	Dimensions		Stud Fasteners	Allowable Uplift Loads 33 mil (20 ga)	Code Ref.
		W	L			
SP4	33 (20ga)	3 1/16	7 1/4	6 - #10	825	FC1
SP6	33 (20ga)	5 1/16	7 3/4	6 - #10	825	
SP8	43 (18ga)	7 1/16	8 5/16	6 - #10	930	
SPH4	43 (18ga)	3 1/16	8 3/4	12 - #10	1490	
SPH4R	43 (18ga)	4 1/16	8 3/4	12 - #10	1490	
SPH6	43 (18ga)	5 1/16	9 1/4	12 - #10	1490	
SPH6R	43 (18ga)	6 1/16	8 3/4	12 - #10	1490	
SPH8	43 (18ga)	7 1/16	8 3/8	12 - #10	1490	



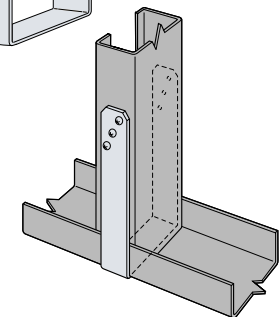
**SP4**



**SPH6**



**Typical SP Installation (Wall to Top Track)**



**Typical SP Installation (Wall to Bottom Track)**  
(SPH similar)