

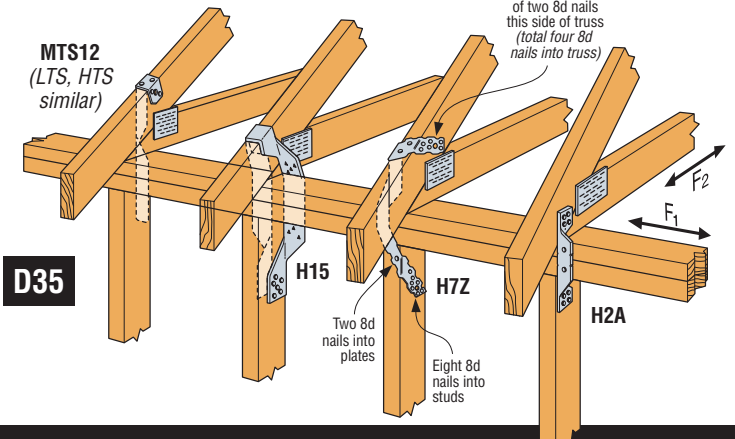
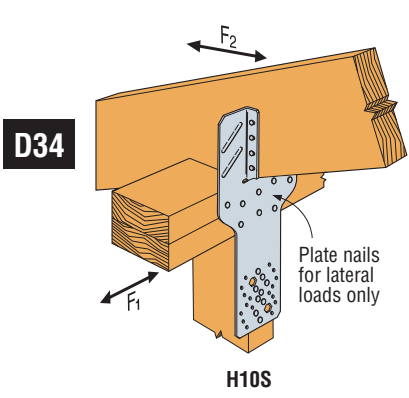
TRUSS/RAFTER TO STUD

These products are available with additional corrosion protection. Additional products on this page may also be available with this option, check with Simpson Strong-Tie for details.
 SS These products are also available in stainless steel for premium corrosion resistance.

Model No.	Qty. Req'd	Fasteners (Total)			DF/SP Allowable Loads			SPF Allowable Loads		
		To Truss/Rafters	To Studs	To Plates	Uplift (160)	Parallel to Plate (F ₁) (160)	Perp. to Plate (F ₂) (160)	Uplift (160)	Parallel to Plate (F ₁) (160)	Perp. to Plate (F ₂) (160)
H2A	1	5-8dx1½	5-8dx1½	2-8dx1½	575	130	55	495	130	55
LTS12	1	6-10dx1½	6-10dx1½	—	720	75	125	620	75	125
H7Z	1	4-8d	8-8d	2-8d	985	400	—	845	345	—
MTS12	1	7-10dx1½	7-10dx1½	Footnote 1	1000	300	295	860	250	250
MTS20	1	7-10dx1½	7-10dx1½	Footnote 1	1000	300	295	860	250	250
H10S ^{2,3}	1	8-8dx1½	8-8d	8-8dx1½	1010	545	215	870	470	185
H2A	2	10-8dx1½	10-8dx1½	4-8dx1½	1150	260	110	990	260	110
H15 ⁴	1	4-10dx1½	12-10dx1½	4-10dx1½	1300	480	—	1120	410	—
HTS20	1	12-10dx1½	12-10dx1½	Footnote 1	1450	300 ¹	295 ¹	1245	300 ¹	295 ¹

- When installing MTS and HTS connectors, the following installation instructions are required for the lateral loads to apply. The first 7 nail holes after the bend area must be filled with 10dx1½ nails. This applies to straps on either side of bend area. All additional fasteners may be installed in any remaining strap holes.
- H10S can have the stud offset a maximum of 1" from rafter (center to center) for a reduced uplift of 890 lbs. (DF/SP) and 765 lbs. (SPF).
- H10S nails to plates are optional for uplift but required for lateral loads.
- H15 factory sloped to be 5:12, but 0:12-7:12 roof slope is acceptable.

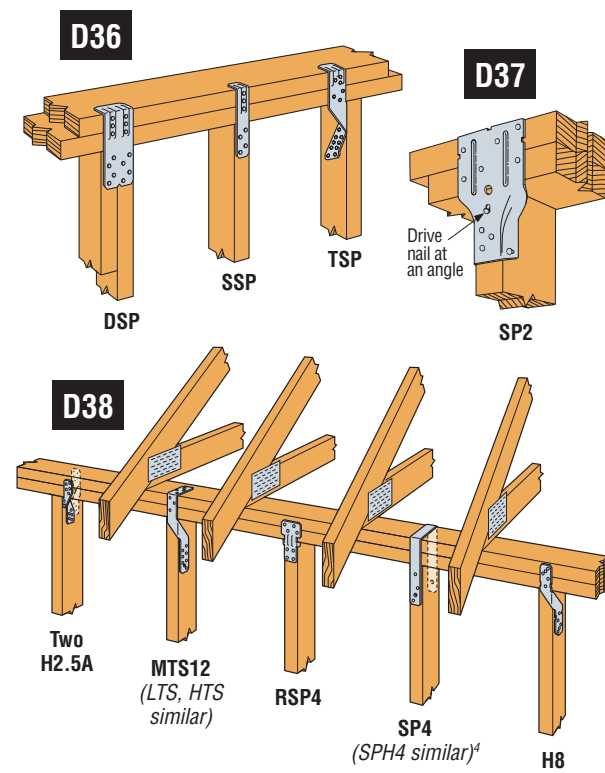
NEW
SS
NEW
NEW
SS



TOP PLATES TO STUD

These products are available with additional corrosion protection. Additional products on this page may also be available with this option, check with Simpson Strong-Tie for details.
 SS These products are also available in stainless steel for premium corrosion resistance.

Model No.	Qty. Req'd	Fasteners (Total)		DF/SP Allowable Loads	SPF Allowable Loads
		To Plates	To Studs	Uplift (160)	Uplift (160)
SSP	1	3-10dx1½	4-10dx1½	350	350
RSP4	1	4-8dx1½	4-8dx1½	450	370
H5	1	4-8dx1½	4-8dx1½	455	265
H2.5A	1	5-8dx1½	5-8dx1½	480	480
LTS12	1	6-10dx1½	6-10dx1½	720	620
H8	1	5-10dx1½	5-10dx1½	745	565
TSP	1	6-10dx1½	9-10dx1½	755	650
DSP	1	6-10dx1½	8-10dx1½	775	775
SP4	1	N/R	6-10dx1½	885	760
SP6	1	N/R	6-10dx1½	885	760
SP8	1	N/R	6-10dx1½	885	760
H5	2	8-8dx1½	8-8dx1½	910	530
H2.5A	2	10-8dx1½	10-8dx1½	960	960
MTS12	1	7-10dx1½	7-10dx1½	1000	860
TSP	1	6-10d	9-10dx1½	1015	875
SP2 ³	1	6-10d	6-10d	1065	605
SP3 ³	1	6-10d	6-10d	1065	605
LTS12	2	12-10dx1½	12-10dx1½	1440	1240
HTS20	1	12-10dx1½	12-10dx1½	1450	1245
SPH4 ⁴	1	N/R	12-10dx1½	1490 ²	1170
SPH6 ⁴	1	N/R	12-10dx1½	1490 ²	1170
SPH8 ⁴	1	N/R	12-10dx1½	1490 ²	1170
MTS12	2	14-10dx1½	14-10dx1½	2000	1720
HTS20	2	24-10dx1½	24-10dx1½	2900	2490



- N/R—Not required.
- Maximum load for SPH in Doug Fir is 1360 lbs.
- For SP2 and SP3, drive one stud nail at an angle through the stud into the plate to achieve the table load.
- SPH4 and SPH6 can be installed over nominal ½" sheathing with a maximum DF/SP load of 1360 lbs. Order SPH4R or SPH6R.

Truss-to-plate connections not shown for clarity. However they shall be installed on the same side of the wall as plate-to-stud connectors.