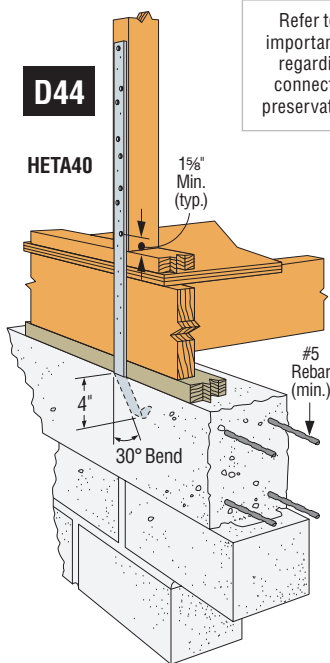
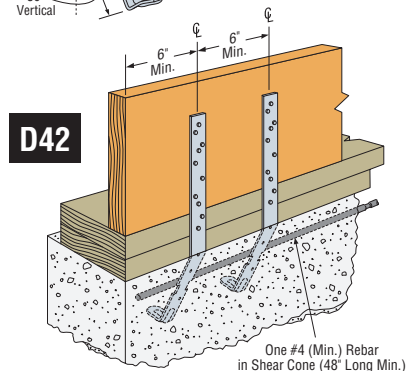
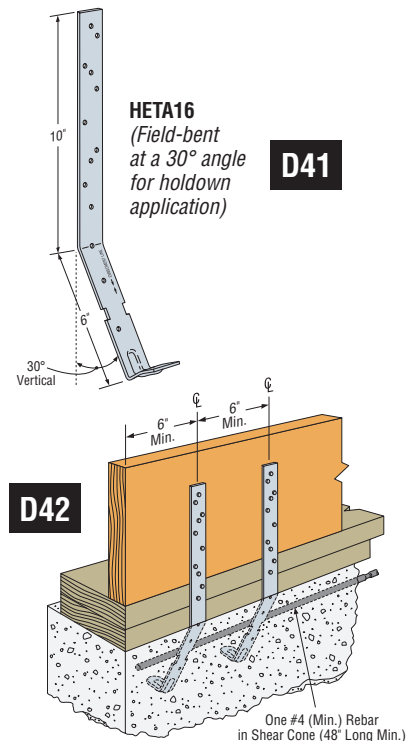


# FLOOR TO MASONRY/CONCRETE

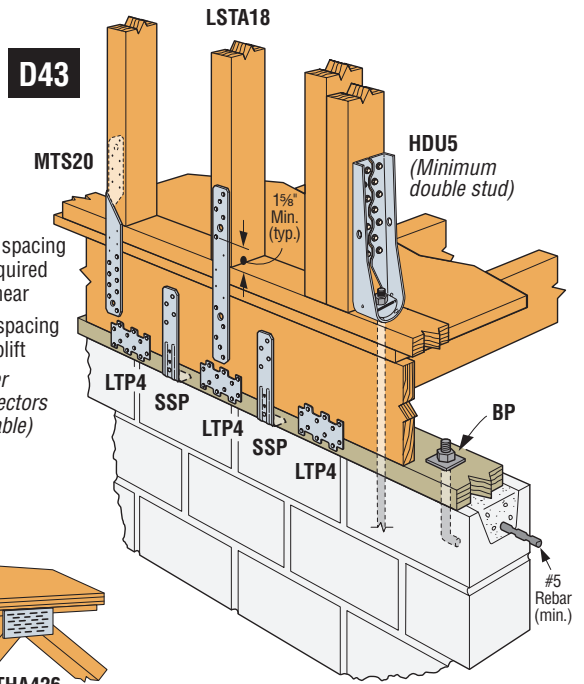
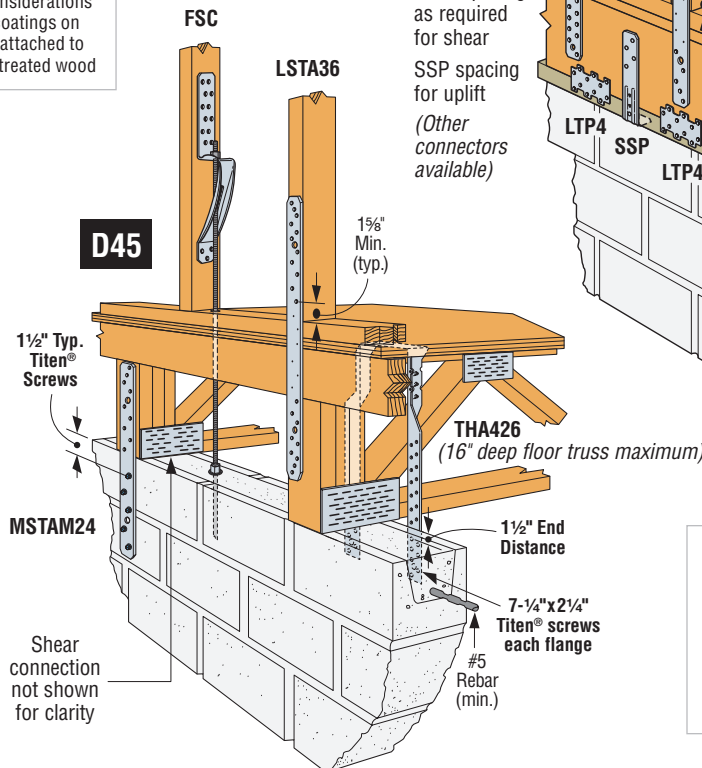
These products are available with additional corrosion protection. Additional products on this page may also be available with this option, check with Simpson Strong-Tie for details.

Model No.	Qty. Req'd	Fasteners To Block/Concrete	DF/SP Allowable Loads		SPF Allowable Loads	
			Fasteners To Wood Framing	Uplift (160)	Fasteners To Wood Framing	Uplift (160)
HETA16	1	Embedded	8-10dx1½	1355	8-10dx1½	1330
MSTAM24	1	5-¼"x2¼" Titen <sup>5</sup>	9-10d	1500	9-10d	1500
HETA20	1	Embedded	10-10dx1½	1810	11-10dx1½	1810
HETA40	1	Embedded	10-10dx1½	1810	11-10dx1½	1810
FSC <sup>8</sup>	1	¾" ATR or THD37634RC <sup>9</sup>	15-10dx1½	1830	15-10dx1½	1570
MSTAM36	1	8-¼"x2¼" Titen <sup>5</sup>	13-10d	1870	13-10d	1870
THA426	1	14-¼"x2¼" Titen <sup>5</sup>	6-16d	2150	6-16d	1850
HETA16	2	Embedded	16-10dx1½	2815	16-10dx1½	2655
HDU2-SDS2.5	1	¾" ATR	10-SDS ¼"x3"	3610	10-SDS ¼"x3"	3375
HTT22	1	¾" ATR	32-10d	4165	32-10d	3580
MSTCM40 <sup>3</sup>	1	14-¼"x2¼" Titen <sup>5</sup>	26-16d Sinkers	4220	26-16d Sinkers	4220
MSTCM60 <sup>3</sup>	1	14-¼"x2¼" Titen <sup>5</sup>	26-16d Sinkers	4220	26-16d Sinkers	4220
HDU5-SDS2.5	1	¾" ATR	14-SDS ¼"x3"	4685	14-SDS ¼"x3"	4380

1. Holdown load values are based on a 3" thick vertical member. See Simpson Strong-Tie® Wood Construction Connectors catalog for load based on different wood thickness.
2. HETA will require a 30° bend and a 4" minimum embedment depth in a concrete tie beam only. Loads based on SP lumber only. Strap may be bent one full cycle only.
3. MSTCM requires attachment to a minimum 3" wide member.
4. Nailing over wood structural panel sheathing is acceptable provided 10 nail diameters minimum penetration into the framing is maintained. See page 10.
5. For concrete applications use ¼"x1¼" Titen<sup>5</sup> screws.
6. ATR—All-Thread Rod or Anchor Bolt. The Designer must specify anchor type, length, and embedment. Refer to technical bulletin T-ANCHORSPEC for guidance on selected products.
7. Where possible cross-grain tension occurs in detail D43, consider full length adjacent connectors or EWP rim designed to resist cross grain tension loads.
8. Standard cut washer is required with the ¾" all thread rod.
9. THDRC listed for use with 8" concrete tie beam, 1¼" edge, 8" end distance, uncracked concrete with no supplementary reinforcement and 2500 psi concrete minimum. Designer shall specify adhesive anchor for CMU bond beam.



Refer to pages 8-9 for important considerations regarding coatings on connectors attached to preservative-treated wood



**TITEN<sup>5</sup> SCREW WARNING:** Industry studies show that hardened fasteners can experience performance problems in wet or corrosive environments. Accordingly, use these products in dry, interior and non-corrosive environments only or provide a moisture barrier.