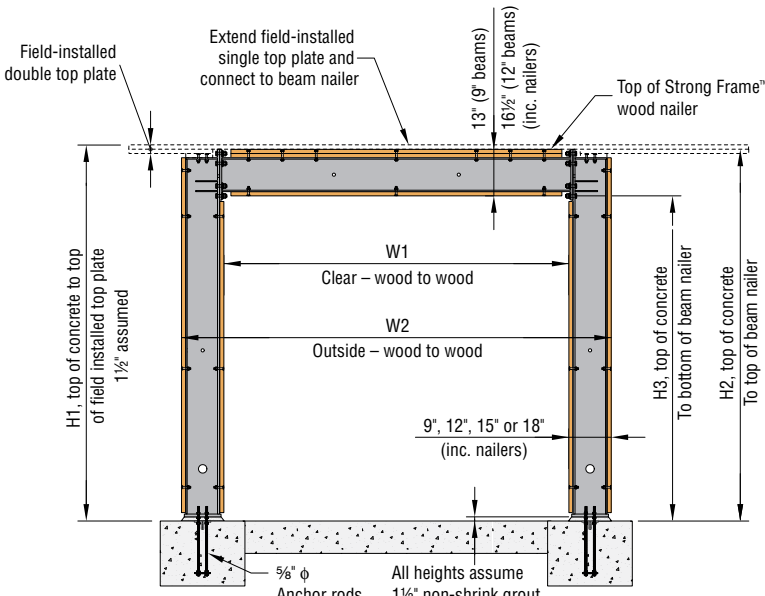


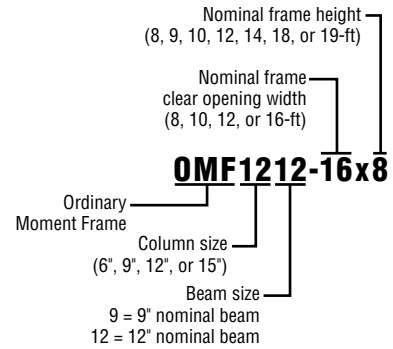
# 8 ft. Nominal Heights: Allowable Loads



Assembly Elevation

Nominal Height	H1	H2	Bottom Nail Height, H3		See Load Tables for W1 W2
			with 9" Beam	with 12" Beam	
8'	8'-0 <sup>3</sup> / <sub>4</sub> "	7'-11 <sup>1</sup> / <sub>4</sub> "	6'-10 <sup>1</sup> / <sub>4</sub> "	6'-6 <sup>3</sup> / <sub>4</sub> "	
9'	9'-0 <sup>3</sup> / <sub>4</sub> "	8'-11 <sup>1</sup> / <sub>4</sub> "	7'-10 <sup>1</sup> / <sub>4</sub> "	7'-6 <sup>3</sup> / <sub>4</sub> "	
10'	10'-0 <sup>3</sup> / <sub>4</sub> "	9'-11 <sup>1</sup> / <sub>4</sub> "	8'-10 <sup>1</sup> / <sub>4</sub> "	8'-6 <sup>3</sup> / <sub>4</sub> "	
12'	12'-0 <sup>3</sup> / <sub>4</sub> "	11'-11 <sup>1</sup> / <sub>4</sub> "	10'-10 <sup>1</sup> / <sub>4</sub> "	10'-6 <sup>3</sup> / <sub>4</sub> "	
14'	14'-0 <sup>3</sup> / <sub>4</sub> "	13'-11 <sup>1</sup> / <sub>4</sub> "	12'-10 <sup>1</sup> / <sub>4</sub> "	12'-6 <sup>3</sup> / <sub>4</sub> "	
18'	18'-2 <sup>3</sup> / <sub>4</sub> "	18'-1 <sup>1</sup> / <sub>4</sub> "	17'-0 <sup>1</sup> / <sub>4</sub> "	16'-8 <sup>3</sup> / <sub>4</sub> "	
19'	19'-2 <sup>3</sup> / <sub>4</sub> "	19'-1 <sup>1</sup> / <sub>4</sub> "	18'-0 <sup>1</sup> / <sub>4</sub> "	17'-8 <sup>3</sup> / <sub>4</sub> "	

H1 assumes a single 2x6 on top of the beam.



## Strong Frame™ Ordinary Moment Frame – 8 ft. Nominal Heights

Model No.	Clear Opening Width, W1	Outside Frame Width, W2	Allowable ASD Shear Load V (lbs) <sup>1</sup>		Maximum Total Gravity Load, W <sub>Max</sub> <sup>3</sup> (lbs)	Drift at Allow Shear Load V (in.)	Shear Reaction Factor, X <sup>4</sup>	Maximum Column Reactions <sup>4</sup>			Top Plate to Nail Connection		Total Frame Weight (lbs)
			Maximum Shear <sup>2</sup>	Minimum Shear <sup>2</sup>				Tension <sup>5</sup> (lbs)	Shear due to w + V (lbs)	Shear due to W <sub>Max</sub> + V (lbs)	16d Option <sup>6</sup>	1/4" x 3 1/2" SDS Screw Option <sup>6</sup>	
OMF69-8x8	8'-2"	9'-8"	4610	4335	37500	0.53	0.074	3910	2835	4945	21	9	751
OMF612-8x8	8'-2"	9'-8"	5510	5095	40000	0.53	0.047	4675	3090	4430	25	11	783
OMF99-8x8	8'-2"	10'-2"	9385	9210	26500	0.53	0.115	7760	5535	7655	42	18	816
OMF912-8x8	8'-2"	10'-2"	12640	12305	40000	0.53	0.090	10450	6980	9775	57	24	849
OMF129-8x8	8'-2"	10'-8"	12415	12260	24000	0.53	0.134	9970	7215	9345	56	23	819
OMF1212-8x8	8'-2"	10'-8"	17890	17660	32000	0.53	0.113	14365	9795	12445	80	33	852
OMF1512-8x8	8'-2"	11'-2"	23655	23610	12000	0.53	0.133	18505	12855	13400	105	44	870
OMF69-10x8	10'-2"	11'-8"	4385	4185	31500	0.53	0.100	3040	3065	5245	20	11	809
OMF612-10x8	10'-2"	11'-8"	5375	5055	40000	0.53	0.066	3725	3265	5170	24	11	848
OMF99-10x8	10'-2"	12'-2"	8560	8440	22000	0.53	0.148	5810	5600	7475	38	16	875
OMF912-10x8	10'-2"	12'-2"	11995	11730	37500	0.53	0.119	8140	7060	10330	54	23	914
OMF129-10x8	10'-2"	12'-8"	11025	10915	21500	0.53	0.167	7305	7040	9050	49	21	878
OMF1212-10x8	10'-2"	12'-8"	16645	16450	30000	0.53	0.145	11025	9645	12575	74	31	917
OMF1512-10x8	10'-2"	13'-2"	21530	21485	14500	0.53	0.167	13955	12325	13165	96	40	934
OMF69-12x8	12'-4"	13'-10"	4155	4015	26500	0.53	0.130	2400	3485	5455	19	13	873
OMF612-12x8	12'-4"	13'-10"	5220	5065	28500	0.53	0.089	3015	3540	5070	24	13	918
OMF99-12x8	12'-4"	14'-4"	7775	7705	19500	0.53	0.183	4415	5835	7420	35	15	939
OMF912-12x8	12'-4"	14'-4"	11325	11120	32500	0.53	0.152	6435	7280	10500	51	21	984
OMF129-12x8	12'-4"	14'-10"	9775	9710	18500	0.53	0.204	5440	7105	8630	44	18	942
OMF1212-12x8	12'-4"	14'-10"	15395	15305	21500	0.53	0.181	8570	9665	11545	69	29	987
OMF1512-12x8	12'-4"	15'-4"	19500	19455	16500	0.53	0.204	10660	12010	13095	87	36	1005
OMF69-16x8	16'-4"	17'-10"	3760	3750	16500	0.53	0.188	1665	5050	4975	17	17	991
OMF612-16x8	16'-4"	17'-10"	4935	4935	15500	0.53	0.136	2185	4485	4575	22	17	1048
OMF99-16x8	16'-4"	18'-4"	6610	6610	12500	0.53	0.250	2885	7385	6430	30	17	1057
OMF912-16x8	16'-4"	18'-4"	10200	10200	10500	0.53	0.215	4455	8080	7360	46	19	1114
OMF129-16x8	16'-4"	18'-10"	8030	8030	12000	0.53	0.272	3455	8430	7280	36	17	1059
OMF1212-16x8	16'-4"	18'-10"	12355	12355	8000	0.49	0.248	5315	9665	8160	55	23	1116
OMF1512-16x8	16'-4"	19'-4"	12600	12600	8000	0.40	0.273	5345	10245	8485	56	24	1134

See footnotes on next page