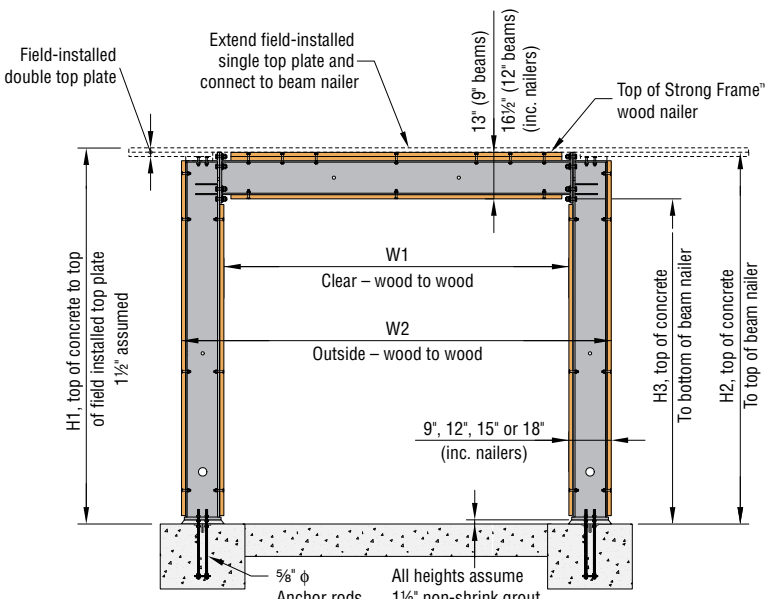


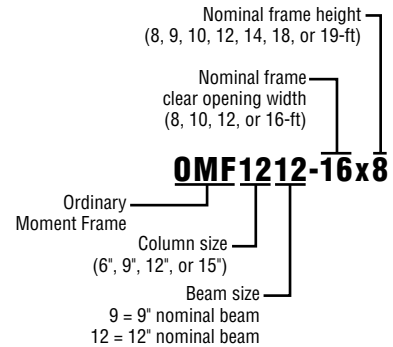
10 ft. Nominal Heights: Allowable Loads



Assembly Elevation

Nominal Height	H1	H2	Bottom Nailer Height, H3		See Load Tables for W1 W2
			with 9" Beam	with 12" Beam	
8'	8'-0 3/4"	7'-11 1/4"	6'-10 1/4"	6'-6 3/4"	
9'	9'-0 3/4"	8'-11 1/4"	7'-10 1/4"	7'-6 3/4"	
10'	10'-0 3/4"	9'-11 1/4"	8'-10 1/4"	8'-6 3/4"	
12'	12'-0 3/4"	11'-11 1/4"	10'-10 1/4"	10'-6 3/4"	
14'	14'-0 3/4"	13'-11 1/4"	12'-10 1/4"	12'-6 3/4"	
18'	18'-2 3/4"	18'-1 1/4"	17'-0 1/4"	16'-8 3/4"	
19'	19'-2 3/4"	19'-1 1/4"	18'-0 1/4"	17'-8 3/4"	

H1 assumes a single 2x6 on top of the beam.



Strong Frame™ Ordinary Moment Frame – 10 ft. Nominal Heights

Model No.	Clear Opening Width, W1	Outside Frame Width, W2	Allowable ASD Shear Load V (lbs) ¹		Maximum Total Gravity Load, W _{Max} ³ (lbs)	Drift at Allow Shear Load V (in.)	Shear Reaction Factor, X ⁴	Maximum Column Reactions ⁴			Top Plate to Nailer Connection		Total Frame Weight (lbs)
			Maximum Shear ²	Minimum Shear ³				Tension ⁵ (lbs)	Shear due to w + V (lbs)	Shear due to W _{Max} + V (lbs)	16d Option ⁵	1/4" x 3 1/2" SDS Screw Option ⁶	
OMF69-8x10	8'-2"	9'-8"	2925	2670	36000	0.67	0.051	3135	1825	3170	13	9	869
OMF612-8x10	8'-2"	9'-8"	3385	2990	40000	0.67	0.031	3630	1915	2735	16	9	901
OMF99-8x10	8'-2"	10'-2"	6320	6070	35500	0.67	0.084	6610	3775	6015	29	12	950
OMF912-8x10	8'-2"	10'-2"	8135	7725	40000	0.67	0.062	8505	4520	7085	37	15	983
OMF129-8x10	8'-2"	10'-8"	8585	8365	32000	0.67	0.100	8720	5045	7385	39	16	950
OMF1212-8x10	8'-2"	10'-8"	11790	11515	37500	0.67	0.081	11975	6505	8795	53	22	983
OMF1512-8x10	8'-2"	11'-2"	16020	15805	30500	0.67	0.097	15845	8760	10860	72	30	1001
OMF69-10x10	10'-2"	11'-8"	2805	2620	30000	0.67	0.069	2455	2005	3380	13	11	927
OMF612-10x10	10'-2"	11'-8"	3310	3010	40000	0.67	0.044	2900	2040	3265	15	11	966
OMF99-10x10	10'-2"	12'-2"	5825	5655	28000	0.67	0.108	5000	3875	5850	26	11	1009
OMF912-10x10	10'-2"	12'-2"	7780	7440	40000	0.67	0.083	6675	4630	7040	35	15	1048
OMF129-10x10	10'-2"	12'-8"	7715	7555	26500	0.67	0.126	6460	5010	7115	35	15	1009
OMF1212-10x10	10'-2"	12'-8"	11085	10845	35500	0.67	0.105	9285	6500	9150	50	21	1048
OMF1512-10x10	10'-2"	13'-2"	14760	14620	24500	0.67	0.123	12100	8530	10325	66	28	1066
OMF69-12x10	12'-4"	13'-10"	2665	2535	26000	0.67	0.091	1950	2350	3635	13	13	991
OMF612-12x10	12'-4"	13'-10"	3225	3080	27500	0.67	0.059	2355	2230	3165	15	13	1036
OMF99-12x10	12'-4"	14'-4"	5345	5235	23500	0.67	0.136	3840	4120	5815	24	13	1073
OMF912-12x10	12'-4"	14'-4"	7405	7205	33500	0.67	0.107	5320	4840	7185	33	14	1118
OMF129-12x10	12'-4"	14'-10"	6915	6810	22500	0.67	0.154	4870	5130	6870	31	13	1073
OMF1212-12x10	12'-4"	14'-10"	10355	10245	23500	0.67	0.132	7290	6610	8225	46	20	1118
OMF1512-12x10	12'-4"	15'-4"	13510	13430	20000	0.67	0.152	9340	8435	9755	60	25	1136
OMF69-16x10	16'-4"	17'-10"	2440	2430	16000	0.67	0.134	1365	3510	3360	17	17	1109
OMF612-16x10	16'-4"	17'-10"	3065	3065	14500	0.67	0.092	1715	2930	2865	17	17	1166
OMF99-16x10	16'-4"	18'-4"	4605	4600	16000	0.67	0.187	2545	5395	5290	21	17	1191
OMF912-16x10	16'-4"	18'-4"	6755	6755	14000	0.67	0.154	3730	5555	5535	30	17	1248
OMF129-16x10	16'-4"	18'-10"	5755	5755	12000	0.67	0.207	3130	6285	5360	26	17	1190
OMF1212-16x10	16'-4"	18'-10"	9165	9165	9500	0.67	0.183	4985	7155	6320	41	17	1247
OMF1512-16x10	16'-4"	19'-4"	10430	10430	8000	0.60	0.205	5595	8140	6855	47	20	1266

See footnotes on next page