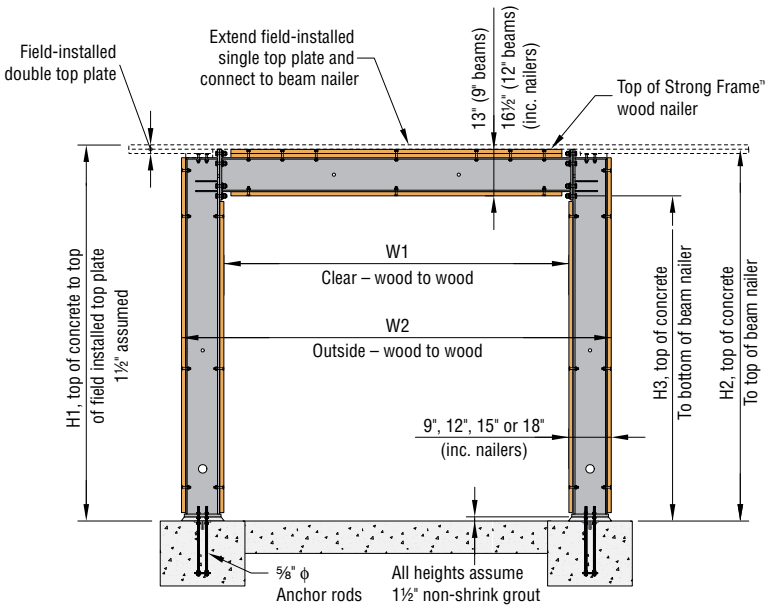


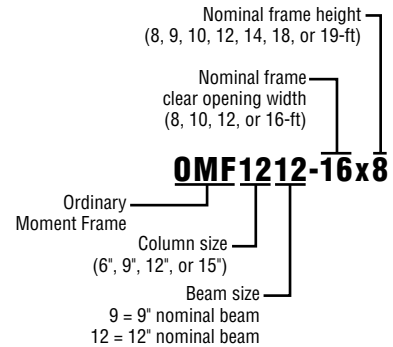
14 ft. Nominal Heights: Allowable Loads



Assembly Elevation

Nominal Height	H1	H2	Bottom Nailer Height, H3		See Load Tables for W1 W2
			with 9" Beam	with 12" Beam	
8'	8'-0 ³ / ₄ "	7'-11 ¹ / ₄ "	6'-10 ¹ / ₄ "	6'-6 ³ / ₄ "	
9'	9'-0 ³ / ₄ "	8'-11 ¹ / ₄ "	7'-10 ¹ / ₄ "	7'-6 ³ / ₄ "	
10'	10'-0 ³ / ₄ "	9'-11 ¹ / ₄ "	8'-10 ¹ / ₄ "	8'-6 ³ / ₄ "	
12'	12'-0 ³ / ₄ "	11'-11 ¹ / ₄ "	10'-10 ¹ / ₄ "	10'-6 ³ / ₄ "	
14'	14'-0 ³ / ₄ "	13'-11 ¹ / ₄ "	12'-10 ¹ / ₄ "	12'-6 ³ / ₄ "	
18'	18'-2 ³ / ₄ "	18'-1 ¹ / ₄ "	17'-0 ¹ / ₄ "	16'-8 ³ / ₄ "	
19'	19'-2 ³ / ₄ "	19'-1 ¹ / ₄ "	18'-0 ¹ / ₄ "	17'-8 ³ / ₄ "	

H1 assumes a single 2x6 on top of the beam.



Strong Frame™ Ordinary Moment Frame – 14 ft. Nominal Heights

Model No.	Clear Opening Width, W1	Outside Frame Width, W2	Allowable ASD Shear Load V (lbs) ¹		Maximum Total Gravity Load, W _{Max} ³ (lbs)	Drift at Allow Shear Load V (in.)	Shear Reaction Factor, X ⁴	Maximum Column Reactions ⁴			Top Plate to Nailer Connection		Total Frame Weight (lbs)
			Maximum Shear ²	Minimum Shear ³				Tension ⁵ (lbs)	Shear due to w + V (lbs)	Shear due to W _{Max} + V (lbs)	16d Option ⁶	1/4" x 3 1/2" SDS Screw Option ⁶	
OMF69-8x14	8'-2"	9'-8"	1460	1220	34500	0.95	0.028	2220	930	1575	9	9	1105
OMF612-8x14	8'-2"	9'-8"	1630	1260	40000	0.95	0.016	2480	930	1270	9	9	1138
OMF99-8x14	8'-2"	10'-2"	3425	3135	40000	0.95	0.051	5080	2085	3610	16	9	1219
OMF912-8x14	8'-2"	10'-2"	4155	3785	40000	0.95	0.035	6160	2335	3295	19	9	1251
OMF129-8x14	8'-2"	10'-8"	4835	4640	29500	0.95	0.063	6965	2890	4180	22	9	1212
OMF1212-8x14	8'-2"	10'-8"	6220	6050	26500	0.95	0.048	8960	3470	4295	28	12	1245
OMF1512-8x14	8'-2"	11'-2"	8770	8715	14000	0.95	0.060	12305	4850	5200	39	17	1265
OMF69-10x14	10'-2"	11'-8"	1405	1235	28500	0.95	0.039	1745	1045	1730	11	11	1164
OMF612-10x14	10'-2"	11'-8"	1590	1315	40000	0.95	0.023	1975	995	1580	11	11	1202
OMF99-10x14	10'-2"	12'-2"	3200	2980	34000	0.95	0.067	3895	2195	3770	15	11	1277
OMF912-10x14	10'-2"	12'-2"	4010	3695	40000	0.95	0.048	4880	2435	3770	18	11	1316
OMF129-10x14	10'-2"	12'-8"	4425	4255	28500	0.95	0.081	5255	2950	4435	20	11	1271
OMF1212-10x14	10'-2"	12'-8"	5930	5775	26500	0.95	0.063	7045	3540	4555	27	11	1309
OMF1512-10x14	10'-2"	13'-2"	8220	8155	16500	0.95	0.077	9555	4830	5350	37	16	1330
OMF69-12x14	12'-4"	13'-10"	1340	1225	24500	0.95	0.052	1390	1275	1885	13	13	1227
OMF612-12x14	12'-4"	13'-10"	1545	1415	26000	0.95	0.032	1600	1105	1540	13	13	1273
OMF99-12x14	12'-4"	14'-4"	2975	2820	28500	0.95	0.085	3030	2400	3835	14	13	1341
OMF912-12x14	12'-4"	14'-4"	3855	3680	30500	0.95	0.063	3925	2600	3760	18	13	1386
OMF129-12x14	12'-4"	14'-10"	4025	3885	27500	0.95	0.100	4020	3100	4695	18	13	1334
OMF1212-12x14	12'-4"	14'-10"	5610	5480	26000	0.95	0.081	5600	3685	4845	25	13	1380
OMF1512-12x14	12'-4"	15'-4"	7640	7575	18500	0.95	0.096	7490	4880	5565	34	15	1400
OMF69-16x14	16'-4"	17'-10"	1230	1230	14500	0.95	0.079	975	1990	1760	17	17	1345
OMF612-16x14	16'-4"	17'-10"	1470	1470	14000	0.95	0.050	1165	1520	1435	17	17	1402
OMF99-16x14	16'-4"	18'-4"	2610	2575	18500	0.95	0.120	2045	3335	3510	17	17	1459
OMF912-16x14	16'-4"	18'-4"	3570	3550	17500	0.95	0.093	2795	3165	3405	17	17	1516
OMF129-16x14	16'-4"	18'-10"	3415	3415	14500	0.95	0.137	2635	4010	3695	17	17	1452
OMF1212-16x14	16'-4"	18'-10"	5070	5070	11500	0.95	0.114	3910	4175	3845	23	17	1509
OMF1512-16x14	16'-4"	19'-4"	6700	6700	9500	0.95	0.132	5095	5235	4605	30	17	1529

See footnotes on next page