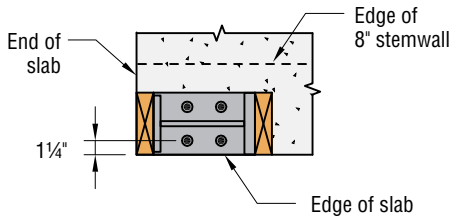
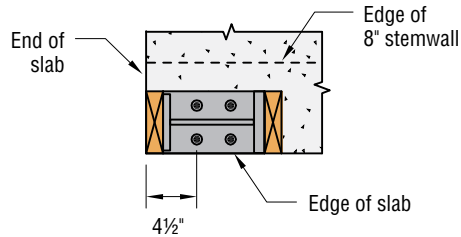


Possible Edge and End-Distance Configurations For Wall Bracing Anchorage

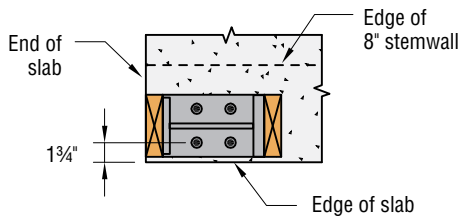
Some of the foundation anchorage conditions that exist may require that the Strong Frame™ ordinary moment frame column be installed away from the edge or end of concrete to meet the minimum end distance and/or edge distance requirements. These illustrations show how additional studs or larger studs may be added to conceal the Strong Frame ordinary moment frame columns while achieving the minimum end and edge distances from the tables.



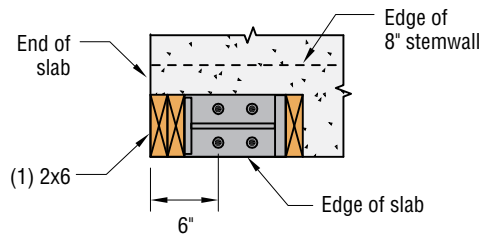
1 1/4" Edge Distance



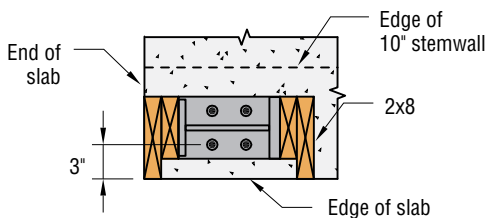
4 1/2" End Distance



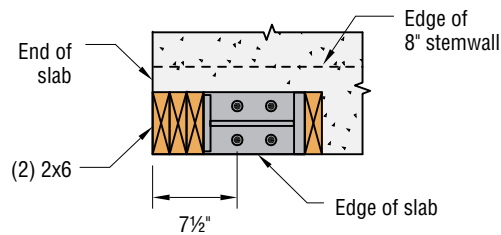
1 3/4" Edge Distance



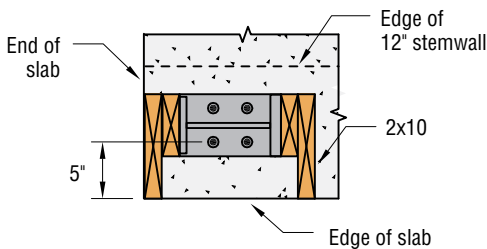
6" End Distance



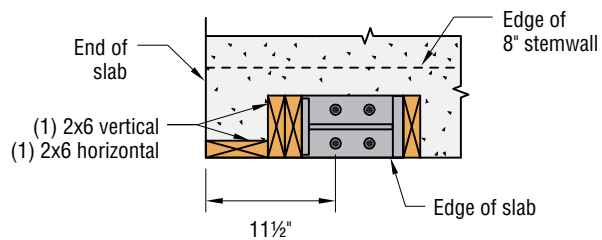
3" Edge Distance



7 1/2" End Distance



5" Edge Distance



11 1/2" End Distance

(9" Column Shown)