

**Wall Bracing** *Wind Solutions for Concrete Masonry Unit Foundations*

Equivalent Wall Bracing Length (ft)	Nominal Frame Width (ft)	Model No.	Minimum <sup>7</sup> Footing Width, W (in)	Minimum <sup>7</sup> Footing Depth, D (in)	Post Installed (Adhesive) 3/8" Rod with SET-XP™/ SET/ AT®		
					Minimum <sup>2</sup> End Distance (in)	Minimum <sup>3</sup> Embedment Depth - l <sub>e</sub> (in)	Minimum CMU Stem Width (in)
<b>SINGLE STORY</b>							
<b>8' Nominal Heights</b>							
8	8	OMF69-8x8	18	14	4.5	6	8
	10	OMF69-10x8					
	12	OMF69-12x8					
	16	OMF99-16x8					
12	8	OMF99-8x8	20	14	4.5	6	8
	10	OMF99-10x8					
	12	OMF99-12x8					
	16	OMF99-16x8					
<b>9' Nominal Heights</b>							
8	8	OMF69-8x9	18	14	4.5	6	8
	10	OMF69-10x9					
	12	OMF69-12x9					
	16	OMF99-16x9					
12	8	OMF99-8x9	20	14	4.5	6	8
	10	OMF99-10x9					
	12	OMF99-12x9					
	16	OMF99-16x9					
<b>10' Nominal Heights</b>							
8	8	OMF69-8x10	18	14	4.5	6	8
	10	OMF69-10x10					
	12	OMF69-12x10					
	16	OMF69-16x10					
12	8	OMF99-8x10	20	14	4.5	6	8
	10	OMF99-10x10					
	12	OMF99-12x10					
	16	OMF99-16x10					
<b>12' Nominal Heights</b>							
8	8	OMF69-8x12	18	14	4.5	6	8
	10	OMF69-10x12					
	12	OMF69-12x12					
	16	OMF69-16x12					
12	8	OMF99-8x12	20	14	4.5	6	8
	10	OMF99-10x12					
	12	OMF99-12x12					
	16	OMF99-16x12					
<b>1ST STORY OF 2 STORIES</b>							
<b>8' Nominal Heights</b>							
8	8	OMF99-8x8	22	14	4.5	6	8
	10	OMF99-10x8					
	12	OMF99-12x8					
	16	OMF99-16x8					
12	8	OMF99-8x8	26	14	4.5	6	8
	10	OMF99-10x8					
	12	OMF99-12x8					
	16	OMF99-16x8					
<b>9' Nominal Heights</b>							
8	8	OMF99-8x9	22	14	4.5	6	8
	10	OMF99-10x9					
	12	OMF99-12x9					
	16	OMF99-16x9					
12	8	OMF99-8x9	26	14	4.5	6	8
	10	OMF99-10x9					
	12	OMF99-12x9					
	16	OMF912-16x9					
<b>10' Nominal Heights</b>							
8	8	OMF99-8x10	22	14	4.5	6	8
	10	OMF99-10x10					
	12	OMF99-12x10					
	16	OMF99-16x10					
12	8	OMF99-8x10	26	14	4.5	6	8
	10	OMF99-10x10					
	12	OMF99-12x10					
	16	OMF99-16x10					
<b>12' Nominal Heights</b>							
8	8	OMF99-8x12	22	14	4.5	6	8
	10	OMF99-10x12					
	12	OMF99-12x12					
	16	OMF99-16x12					
12	8	OMF99-8x12	26	14	4.5	6	8
	10	OMF99-10x12					
	12	OMF912-12x12					
	16	OMF912-16x12					

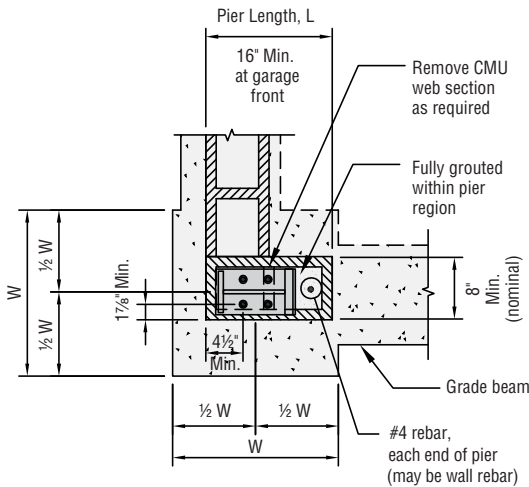
See next page for footnotes

# Wall Bracing *Wind Solutions for Concrete Masonry Unit Foundations*

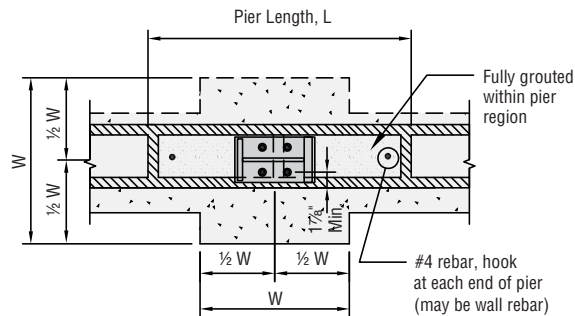
Equivalent Wall Bracing Length (ft)	Nominal Frame Width (ft)	Model No.	Minimum <sup>7</sup> Footing Width, W (in)	Minimum <sup>7</sup> Footing Depth, D (in)	Post Installed (Adhesive) 3/8" Rod with SET-XP™/ SET/ AT®		
					Minimum <sup>2</sup> End Distance (in)	Minimum <sup>3</sup> Embedment Depth - l <sub>e</sub> (in)	Minimum CMU Stem Width (in)
<b>BALLOON FRAMING</b>							
<b>18' Nominal Heights</b>							
8	8	OMF99-8x18	22	14	4.5	6	8
	10	OMF99-10x18					
	12	OMF99-12x18					
	16	OMF99-16x18					
12	8	OMF99-8x18	24	14	4.5	6	8
	10	OMF99-10x18					
	16	OMF99-16x18					
<b>19' Nominal Heights</b>							
8	8	OMF99-8x19	22	14	4.5	6	8
	10	OMF99-10x19					
	12	OMF99-12x19					
	16	OMF99-16x19					
12	8	OMF99-8x19	24	14	4.5	6	8
	10	OMF99-10x19					
	12	OMF99-12x19					
	16	OMF99-16x19					

1. See general notes for additional information.
2. See foundation details for typical minimum end distances and edge distances.
3. Embedment depths indicated are into concrete footing.
4. Concrete masonry units (ASTM C90) shall have minimum compressive strength f'm ≥ 1500 psi. CMU units shall be fully grouted. Minimum grout (ASTM C476) strength shall be no less than 2000 psi. Mortar (ASTM C 270) shall be Type M or S.

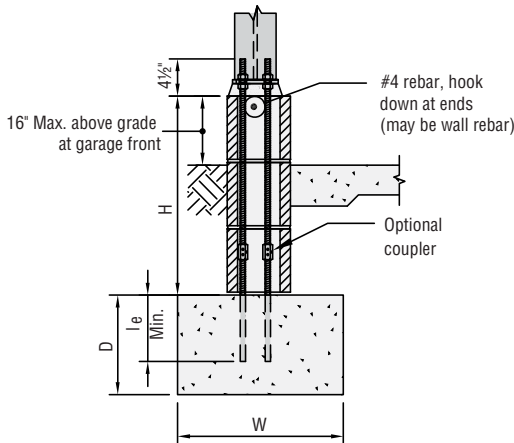
5. Solutions are applicable to wind and seismic design category A and B. Detached 1 and 2 family dwellings in SDC C may also use wind solutions.
6. For Simpson Strong-Tie® Acrylic-Tie® adhesive solutions, increase embedment depths shown by 4".
7. See pages 59–60 for footing and grade-beam size and reinforcing required.



**Plan View at Corner**



**Plan View Away From Corner**



**Section View Adhesive Application**

**CMU Pier Schedule**

Maximum Pier Height, H (in)	Minimum Pier Length, L (in)
≤ 32	24
48	32
72	32
96	48
120	64