



Make Your Project Easy, Safe and Strong with Simpson Utility Connectors

SHELVES: These easy to build shelves will get you organized. The sizes shown are standard but can be customized to meet your needs. They can be easily finished with paint to match the decor of your home. These shelves are ideal for the garage, basement, office or playroom. For heavy-duty requirements, use the 2x4 materials for either the 4' or 8' long versions. Notch the corners of the intermediate shelves to allow the legs to pass through.

1 Regular Shelves – with 2x2 lumber, 4 foot unit, 6 shelves *

Quantity	Materials List:	Size	Materials	Length
	2x2	Lumber	8'	12 each
	1/4"	Plywood	4'x8'	1 sheet
	Simpson RTC22	Connector	—	24
	Simpson SD8x1.25	Screw	—	3 packs
	1"	Finishing Nails	—	72
	1"	Glides For Legs	—	4

Cut List:	Description	Quantity	Size	Cut Length
	Front Rails	6	2x2	45"
	Rear Rails	6	2x2	45"
	Side Rails	12	2x2	12-7/8"
	Legs	4	2x2	80-1/2"
	Shelves	6	1/4" Plywood	48" x 15-7/8"

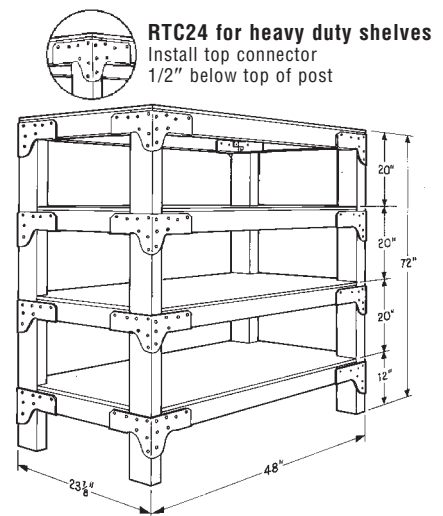
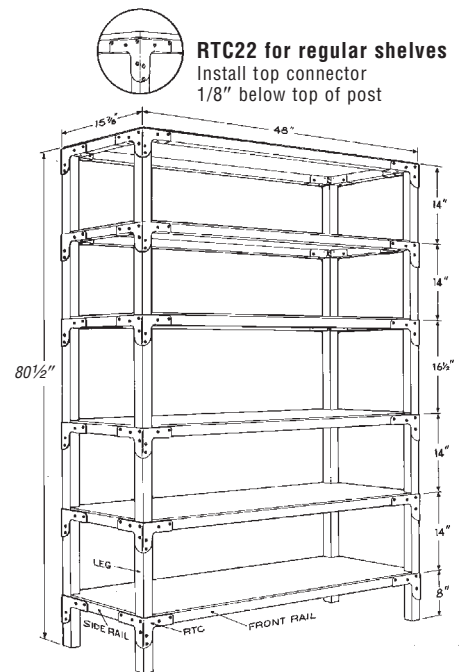
*Use 1" nails to attach shelves to rails.

2 Heavy Duty Shelves – with 2x4 lumber, 4 foot unit, 4 shelves **

Materials List:	Size	Materials	Length	Quantity	
				4' Shelf	8' Shelf
	2x4	Lumber	8'	9 each	13 each
	1/2"	Plywood	4'x8'	1 sheet	2 sheets
	Simpson RTC24	Connector	—	16	16
	Simpson SD8x1.25	Screw	—	4 packs	4 packs

Cut List:	Description	Quantity	Size	Cut Length	
				4' Shelf	8' Shelf
	Rails	8	2x4	45"	93"
	Side Rails	8	2x4	16-3/4"	16-3/4"
	Legs	4	2x4	71-1/2"	71-1/2"
	Shelves	4	1/2" Plywood	48" x 23-7/8"	96" x 23-7/8"

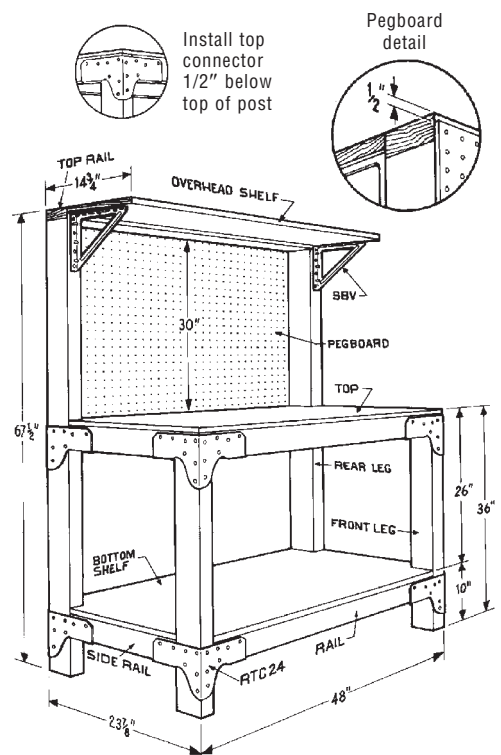
** Bottom shelf should be 7-1/8" above floor. Allow 21-5/8" height between shelves.



3 WORKBENCH WITH SHELVES: Designed for heavy duty everyday use, this workbench is ideal for the garage or basement. The durable bench provides a neat, organized area for project development. Shelves and a pegboard back give you a place to store your tools.

Materials List:	Size	Materials	Length	Quantity
	2x4	Lumber	8'	6 each
	1x12	Lumber	4'	1 each
	3/4"	Plywood	4' x 8'	1/2 sheet
	1/4"	Pegboard	32" x 48"	1 sheet
	Simpson RTC24	Connector	—	8
	Simpson SBV	Shelf Bracket	—	2
	Simpson SD8x1.25	Screw	—	2 packs
	#8 x 5/8"	Panhead Screw	—	6

Cut List:	Description	Quantity	Size	Cut Length
				4' Shelf
	Back Legs	2	2x4	66"
	Front Legs	2	2x4	35-1/4"
	Rails	4	2x4	45"
	Side Rails	4	2x4	16-3/4"
	Plywood Top & Bottom Shelf	2	3/4" Plywood	23-7/8" x 48"
	Overhead Shelf	1	1" x 12"	48"
	Top Rail	1	2x4	48"
	Pegboard	1	1/4"	32" x 48"



Installation Tips

1. The back corners of the top shelf and all bottom shelf corners must be notched to allow 2x4 legs to pass through.
2. Use panhead screws to attach overhead shelf to bracket.
3. If storing extra-heavy items or building a longer bench, use RTF connectors with 5-1/4" center legs for extra support in bench center.

6 PROJECT PLANS

Material Lists, Cut Lists & Installation Instructions



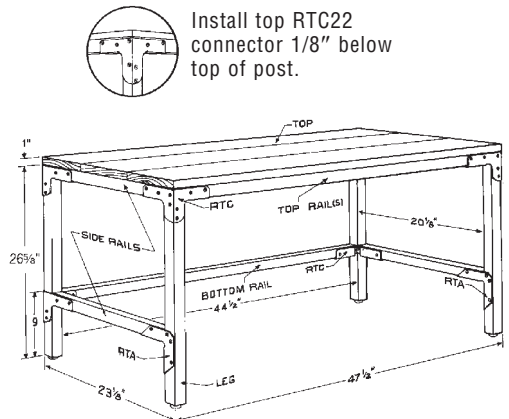
TABLES — REGULAR AND HEAVY DUTY: These extremely useful tables are strong and easy to build. They are ideal as a work, hobby, study or computer table for any room in the house. When attaching the table top, countersink the 2" screws and fill the holes with wood filler for a smoother surface. The regular duty table requires the RTC22 corner connector, and the heavy duty table requires the RTC24 corner connector.

Note: For the heavy duty table with a shelf, all corners must be notched to allow the 2x4 legs to pass through.

4 Regular Table

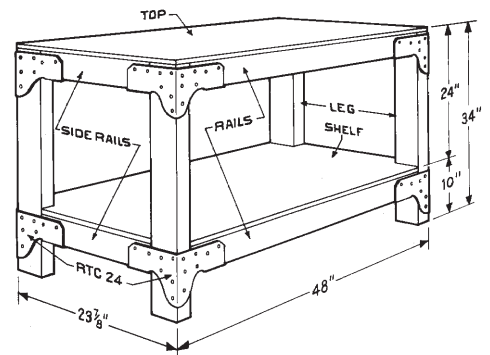
Materials List:	Size	Materials	Length	Quantity
	2x2	Lumber	8'	4 each
	1"	Smooth Plywood	48" x 24" or Glulam Lumber	1 sheet
	Simpson RTC22	Connector	—	6
	Simpson RTA12	Connector	—	4
	Simpson SD8x1.25	Screw	—	1 pack
	2"	#8 Deck Screw	—	16
	1"	Glides For Table Legs	—	4

Cut List:	Description	Quantity	Size	Cut Length
	Top Rails	2	2x2	44-1/2"
	Bottom Rails	1	2x2	44-1/2"
	Side Rails	4	2x2	20-1/8"
	Legs	4	2x2	26-5/8"
	Table top	1	1" Glulam or Smooth Plywood	47-1/2" x 23-1/8"



Install top RTC22 connector 1/8" below top of post.

Install top RTC24 connector 1/2" below top of post.



5 Heavy Duty Table

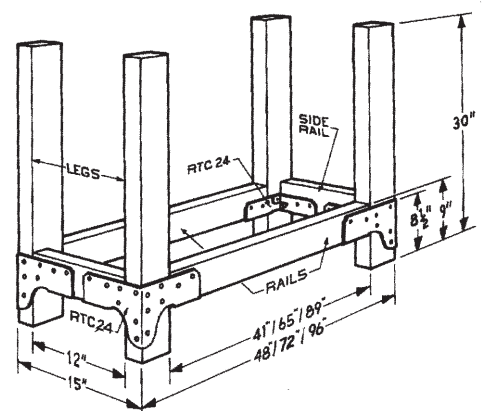
Materials List:	Size	Materials	Length	Quantity
	2x4	Lumber	8'	4 each
	3/4"	Plywood	4' x 8'	1/2 sheet
	Simpson RTC24	Connector	—	8
	Simpson SD8x1.25	Screw	—	2 packs

Cut List:	Description	Quantity	Size	Cut Length
	Legs	4	2x4	33-1/4"
	Rails	4	2x4	45"
	Side Rails	4	2x4	16-3/4"
	Plywood Top & Bottom Shelf	2	3/4"	23-7/8" x 48"

6 LOGHOLDER: This easy-to-build logholder will help keep your firewood dry, accessible and neat-looking year round. The strong Rigid Tie Corner connectors allow the holder to be stacked full, even with the heaviest wood. This project can be customized to meet your space and firewood needs. The 4' version holds approximately 1/4 cord of firewood.

Materials List:	Size	Materials	Length	Quantity
	2x4	Lumber	8'	3 each
	Simpson RTC24	Connector	—	4
	Simpson SD8X1.25	Screw	—	1 pack
	Simpson RTF	Connector	—	—

Cut List:	Description	Quantity	Size	Cut Length
	Legs	4	2x4	30"
	Rails	2	2x4	41"
	Side Rails	2	2x4	12"
	Center Legs	2	2x4	—



*** Installation Tips

1. On 8' Holder, place RTF in the middle of the front and back rails.
2. Center leg extends below.

This technical bulletin reflects information available as of May 1, 2006. This information is updated periodically; contact Simpson for current information and limited warranty or see www.strongtie.com.

Home Office
5956 W. Las Positas Blvd.
Pleasanton, CA 94588
FAX: 925/833-1496

Southwest USA
260 N. Palm Street
Brea, CA 92821
FAX: 714/871-9167

Southeast USA
2221 Country Lane
McKinney, TX 75069
FAX: 972/542-5379

Eastern Canada
5 Kenview Blvd.
Brampton, ON L6T 5G5
FAX: 905/458-7274

Warehouses
Enfield, CT
Jacksonville, FL
Langley, BC

Northwest USA
5151 S. Airport Way
Stockton, CA 95206
FAX: 209/234-3868

Northeast USA
2600 International Street
Columbus, OH 43228
FAX: 614/876-0636

Quik Drive Factory
436 Calvert Drive
Gallatin, TN 37066
FAX: 615/451-9806

Western Canada
11476 Kingston St.
Maple Ridge, BC V2X 0Y5
FAX: 604/465-0297

Specials
Eagan, MN
Kent, WA

800-999-5099
www.strongtie.com

© Copyright 2006 Simpson Strong-Tie Company, Inc.

Printed in the USA

DIY-PROJECTD06 5/06